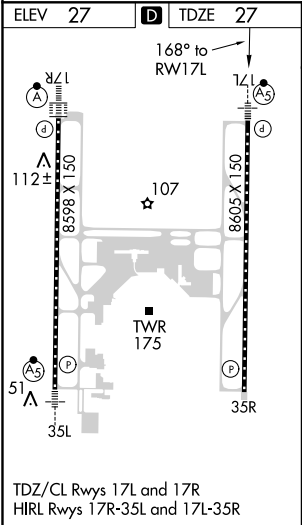
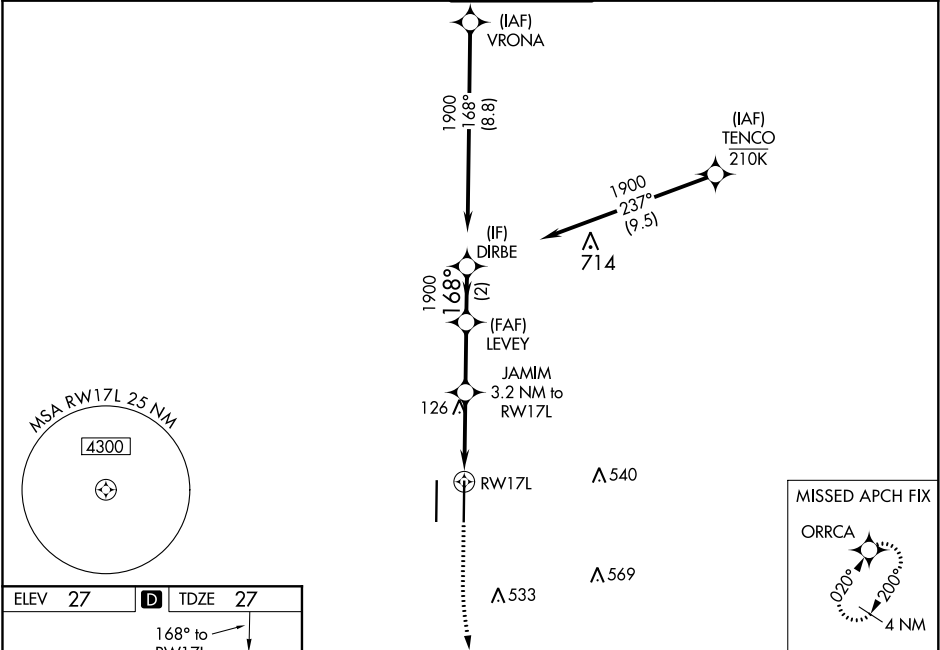





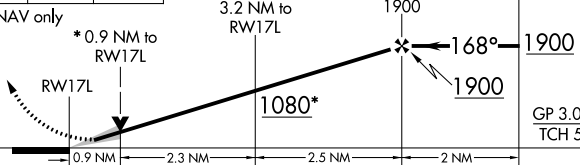

WAAS CH 78327 W17B	APP CRS 168°	Rwy Idg TDZE Apt Elev 27 27	8605
--	------------------------	---	-------------

RNAV (GPS) Y RWY 17L
SACRAMENTO INTL (SMF)

RNP APCH.	MALSR	MISSED APPROACH: Climb to 500 then climbing left turn to 3000 direct ORRCA and hold.
Circling NA west of Rwy 17L-35R. Simultaneous approach authorized. LNAV procedure NA during simultaneous operations. Use of FD or AP required during simultaneous operations. For uncompensated Baro-VNAV systems, LNAV/VNAV NA below -4°C or above 54°C. For inop ALS, increase LNAV/VNAV all Cats visibility to RVR 4000 and LNAV C/D visibility to RVR 5500.		

D-ATIS 126.75	NORCAL APP CON 125.4 259.1 (W-NE) 125.25 257.9 (SW) 127.4 317.5 (E-SE)	CAPITOL TOWER 125.7 256.7	GND CON 121.7 256.7	CLNC DEL 121.1 256.7	CPDLC
-------------------------	---	-------------------------------------	-------------------------------	--------------------------------	-------



500	3000	ORRCA	VGSI and RNAV glidepath not coincident (VGSI Angle 3.00/TCH 64).			
						
*LNAV only						
*0.9 NM to RWY17L						
JAMIM 3.2 NM to RWY17L						
LEVEY 1900			DIRBE 1900			
168°			1900			
1080*			GP 3.00° TCH 55			
CATEGORY		A	B	C	D	
LPV	DA	227/18 200 (200-½)				
LNAV/ VNAV	DA	277/24 250 (300-½)				
LNAV	MDA	380/24	353 (400-½)	380/30	353 (400-¾)	
 CIRCLING		400-1 373 (400-1)	480-1 453 (500-1)	480-1½ 453 (500-1½)	840-2¾ 813 (900-2¾)	