

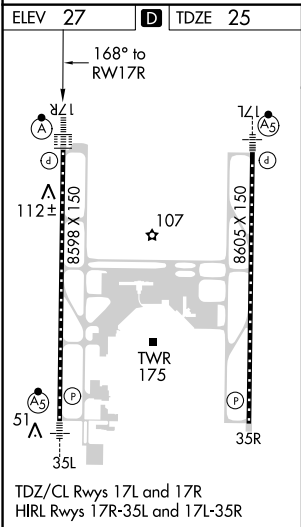
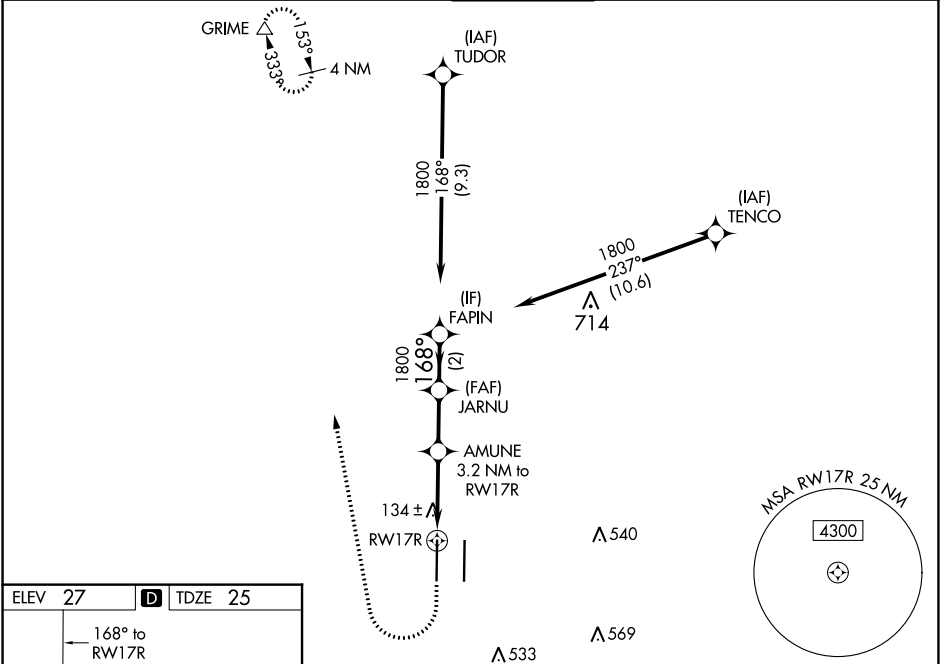
WAAS CH 65728 W17A	APP CRS 168°	Rwy Idg 8598 TDZE 25 Apt Elev 27
--	------------------------	---

RNAV (GPS) Y RWY 17R

SACRAMENTO INTL (SMF)

RNP APCH. ▼ Circling NA east of Rwy 17R-35L. Simultaneous approach authorized. Use of FD or AP required during simultaneous operations. LNAV procedure NA during simultaneous operations. For uncompensated Baro-VNAV systems, LNAV/VNAV NA below -4°C or above 54°C. For inop ALS, increase LNAV/VNAV all Cats visibility to RVR 4500 and LNAV all Cats visibility to RVR 5500.	ALS F-2 A	MISSED APPROACH: Climb to 500 then climbing right turn to 2000 direct GRIME and hold.
---	--------------	---

D-ATIS 126.75	NORCAL APP CON 125.4 259.1 (W-NE) 125.25 257.9 (SW) 127.4 317.5 (E-SE)	CAPITOL TOWER 125.7 256.7	GND CON 121.7 256.7	CLNC DEL 121.1 256.7	CPDLC
-------------------------	---	-------------------------------------	-------------------------------	--------------------------------	-------



500	2000	GRIME △	VGSI and RNAV glidepath not coincident (VGSI Angle 3.00/TCH 72).			
*LNAV only		*1 NM to RW17R	AMUNE 3.2 NM to RW17R	JARNU 1800	FAPIN 1800	
RW17R			1100*	168°	1800	GP 3.00° TCH 57
1 NM		2.2 NM	2.2 NM	2 NM		
CATEGORY	A	B	C	D		
LPV DA	225/18 200 (200-½)					
LNAV/ VNAV DA	323/24 298 (300-½)					
LNAV MDA	400/24 375 (400-½)			400/35 375 (400-¾)		
CIRCLING	440-1 413 (500-1)	480-1 453 (500-1)	480-1½ 453 (500-1½)	580-2 553 (600-2)		

SW-2, 03 DEC 2020 to 31 DEC 2020

SW-2, 03 DEC 2020 to 31 DEC 2020