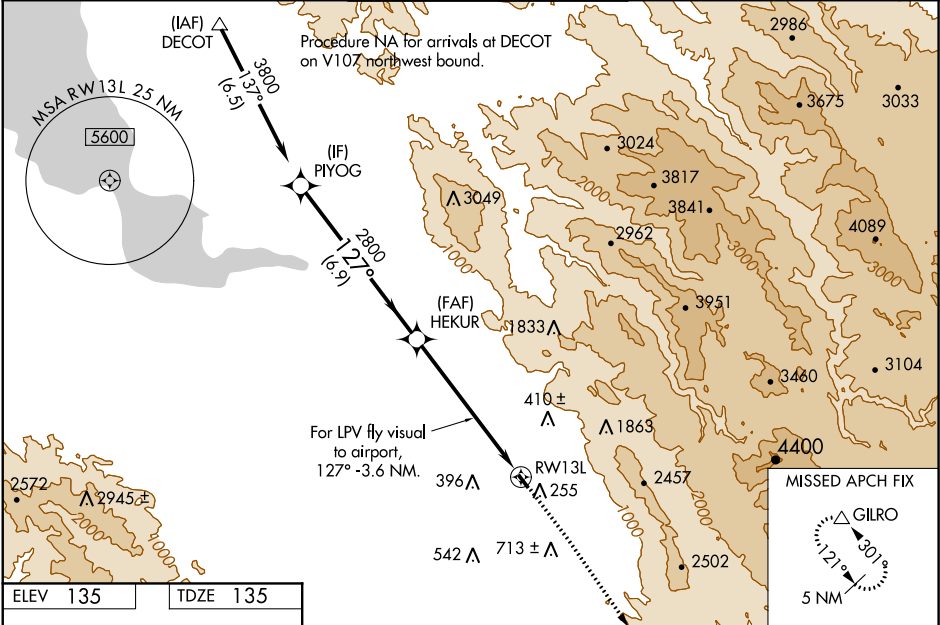


WAAS CH 82216 W13A	APP CRS 127°	Rwy Idg TDZE 135 Apt Elev 135
--	------------------------	---

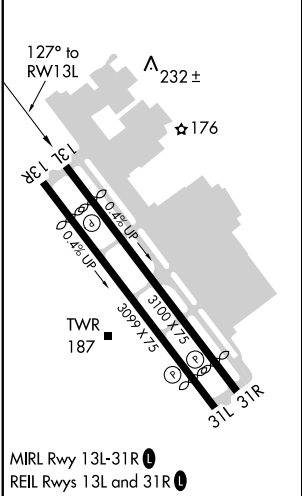
RNAV (GPS) RWY 13L
REID-HILLVIEW OF SANTA CLARA COUNTY (RHY)

RNP APCH.	MISSED APPROACH: Climb to 1900 then climbing right turn to 5000 direct GILRO and hold. #Missed approach requires minimum climb of 300 feet per NM to 2800.
NA	Circling Rwy 31L NA at night. Rwy 13L helicopter visibility reduction below ¾ SM NA. VDP NA with Norman Y Mineta San Jose Intl altimeter setting. When control tower closed, use Norman Y Mineta San Jose Intl altimeter setting and increase all DAs 25 feet and all MDAs 40 feet; increase LPV# visibility to 1¾ SM. Circling east of Rwy 13L-31R NA at night.

ATIS 125.2	NORCAL APP CON 120.1 290.25	REID-HILLVIEW TOWER ★ (Rwy 13L-31R) (Rwy 13R-31L) 119.8 (CTAF) 126.1	GND CON 121.65	UNICOM 122.95
----------------------	---------------------------------------	---	--------------------------	-------------------------



ELEV 135	TDZE 135
----------	----------



PIYOG	HEKUR	* LNAV only.	1900	5000	GILRO
3800	2800		↑	↷	△
GP 4.00°					
TCH 45					
	6.9 NM	4.2 NM	2 NM		
For LPV fly visual to RWY 13L, 127° -3.6 NM.					
CATEGORY	A	B	C	D	
LPV DA#	562-1¼	427 (500-1¼)		NA	
LPV DA	1708-3	1573 (1600-3)		NA	
LNAV MDA#	1040-1¼	905 (1000-1¼)		NA	
LNAV MDA	1600-1¼ 1465 (1500-1¼)	1600-1½ 1465 (1500-1½)		NA	
CIRCLING	1600-1¼ 1465 (1500-1¼)	1600-1½ 1465 (1500-1½)		NA	