

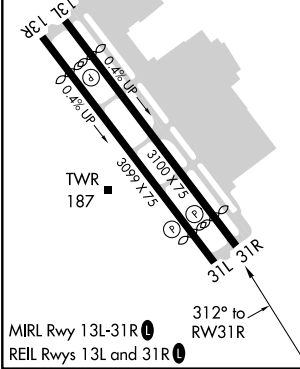
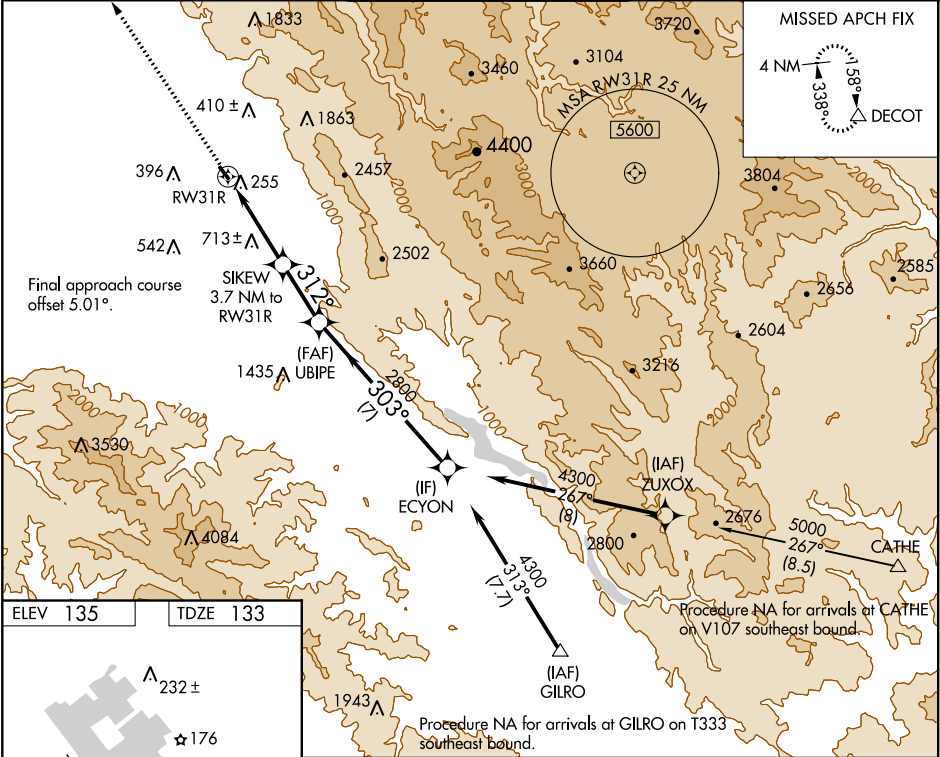
APP CRS	Rwy Idg	2690
312°	TDZE	133
	Apt Elev	135

RNAV (GPS) Y RWY 31R

REID-HILLVIEW OF SANTA CLARA COUNTY (R.H.V.)

RNP APCH.	<p>NA Circling Rwy 31L NA at night. Rwy 31R helicopter visibility reduction below ¾ SM NA. VDP NA when using Norman Y Mineta San Jose Intl altimeter setting. Circling east of Rwy 13L-31R NA at night. When control tower closed, use Norman Y Mineta San Jose Intl altimeter setting and increase all MDAs 40 feet.</p>	MISSED APPROACH: Climb to 4000 direct DECOT and hold.
-----------	---	---

ATIS	NORCAL APP CON	REID-HILLVIEW TOWER ★ (Rwy 13L-31R) (Rwy 13R-31L)	GND CON	UNICOM
125.2	120.1 290.25	119.8 (CTAF) 126.1	121.65	122.95



4000	DECOT	↑	△
<p>SIKEW 3.7 NM to RWY 31R</p> <p>2.6 NM to RWY 31R</p> <p>1.1 NM</p> <p>2.5 NM</p> <p>7 NM</p>			
RWY 31R	1760	312°	303°
CATEGORY			
A			
B			
C			
D			
LNNAV MDA	1300-1¼ 1167 (1200-1¼)	1300-1½ 1167 (1200-1½)	NA
CIRCLING	1300-1¼ 1165 (1200-1¼)	1300-1½ 1165 (1200-1½)	NA

SW-2, 03 DEC 2020 to 31 DEC 2020

SW-2, 03 DEC 2020 to 31 DEC 2020