

WAAS CH 58316 W31A	APP CRS 307°	Rwy Idg 2690 TDZE 133 Apt Elev 135
--	------------------------	---

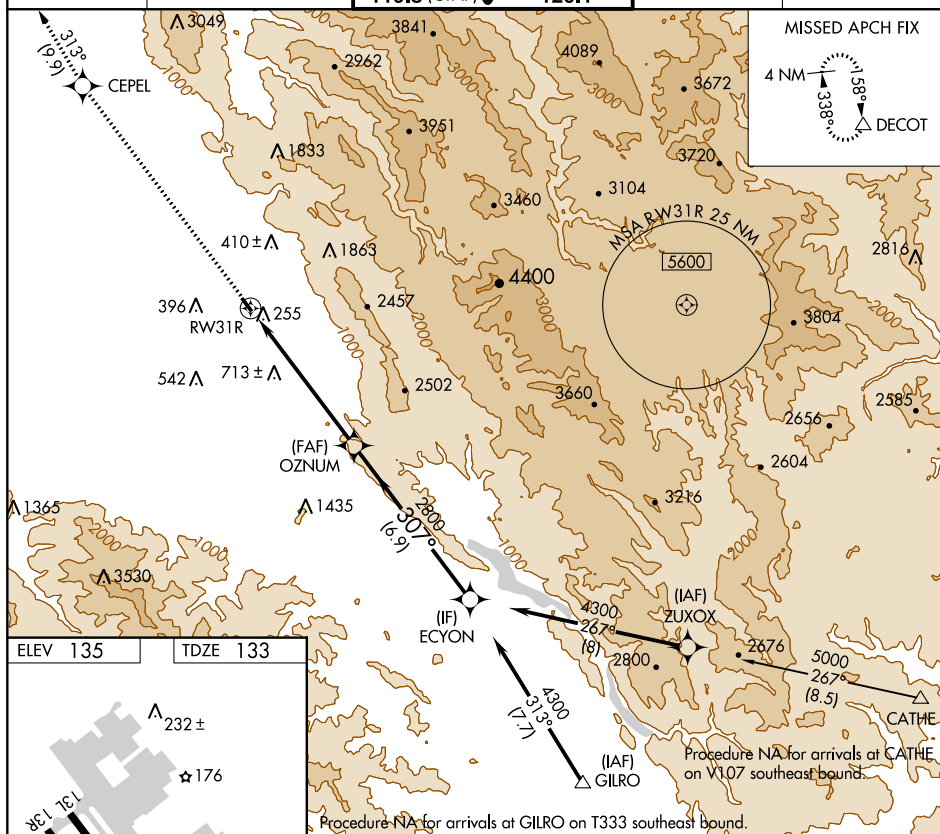
RNAV (GPS) Z RWY 31R
REID-HILLVIEW OF SANTA CLARA COUNTY (RHV)

RNP APCH.

T When control tower closed, use Norman Y Mineta San Jose Intl altimeter setting and increase DA to 558 feet and visibility to 1¼ SM. Rwy 31R helicopter visibility reduction below ¾ SM NA.

MISSED APPROACH: Climb to 4000 direct CEPEL and on track 313° to DECOT and hold.

ATIS 125.2	NORCAL APP CON 120.1 290.25	REID-HILLVIEW TOWER ★ (Rwy 13L-31R) (Rwy 13R-31L) 119.8 (CTAF) 0 126.1	GND CON 121.65	UNICOM 122.95
----------------------	---------------------------------------	---	--------------------------	-------------------------



4000 ↑	CEPEL ✦	tr 313°	DECOT △	<p>OZNUM</p> <p>2800</p> <p>307°</p> <p>4300</p> <p>RW31R</p> <p>GP 4.00° TCH 45</p> <p>6.2 NM</p> <p>6.9 NM</p>			
CATEGORY		A		B		C	D
LPV	DA	533-1 $\frac{1}{8}$ 400 (400-1 $\frac{1}{8}$)				NA	