

WAAS CH 49200 W12A	APP CRS 116°	Rwy Idg TDZE Apt Elev	4001 193 193
--	------------------------	-----------------------------	---

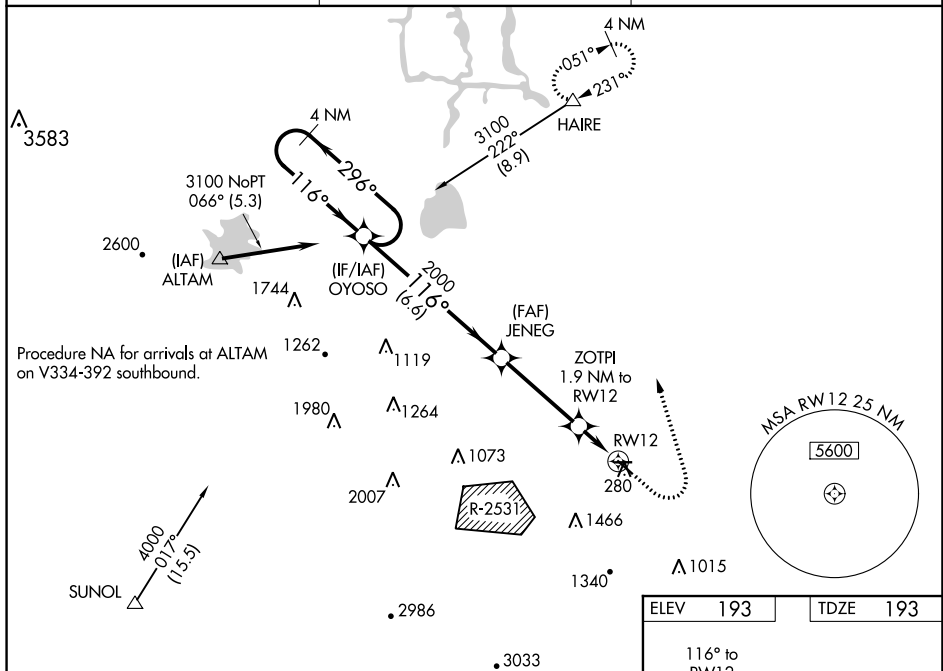
RNAV (GPS) RWY 12
TRACY MUNI (TCY)

RNP APCH

▼ For uncompensated Baro-VNAV systems, LNAV/VNAV NA below -15°C or above 54°C.
Circling NA southwest of Rwy 12-30. Baro-VNAV and VDP NA when using Stockton altimeter setting.
Circling Rwy 30 NA at night. Rwy 12 helicopter visibility reduction below $\frac{3}{4}$ SM NA.
When local altimeter setting not received, use Stockton altimeter setting: increase all DAs to 507 feet; increase all MDAs 60 feet and visibilities LNAV Cat C $\frac{1}{2}$ SM.

MISSED APPROACH:
Climb to 700 then
climbing left turn to
3200 direct HAIRE
and hold.

AWOS-3 118.375	NORCAL APP CON 123.85 278.3	UNICOM 123.075 (CTAF) 0
--------------------------	---------------------------------------	-----------------------------------



CATEGORY	A	B	C	D
LPV DA	443-7/8	250 (300-7/8)		NA
RNAV/VNAV DA	447-7/8	254 (300-7/8)		NA
RNAV MDA	520-1	327 (400-1)		NA
C CIRCLING	580-1 387 (400-1)	660-1 467 (500-1)	660-1 1/2 467 (500-1 1/2)	NA

