

LOC/DME I-LHM 108.75 Chan 24 (Y)	APP CRS 151°	Rwy Idg 6001 TDZE 121 Apt Elev 121
--	------------------------	---

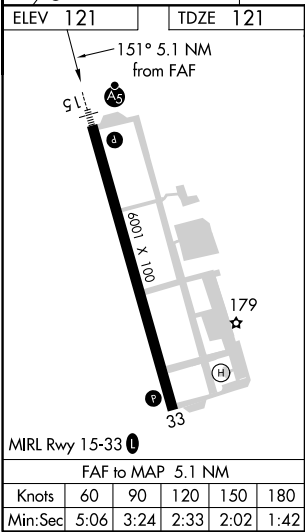
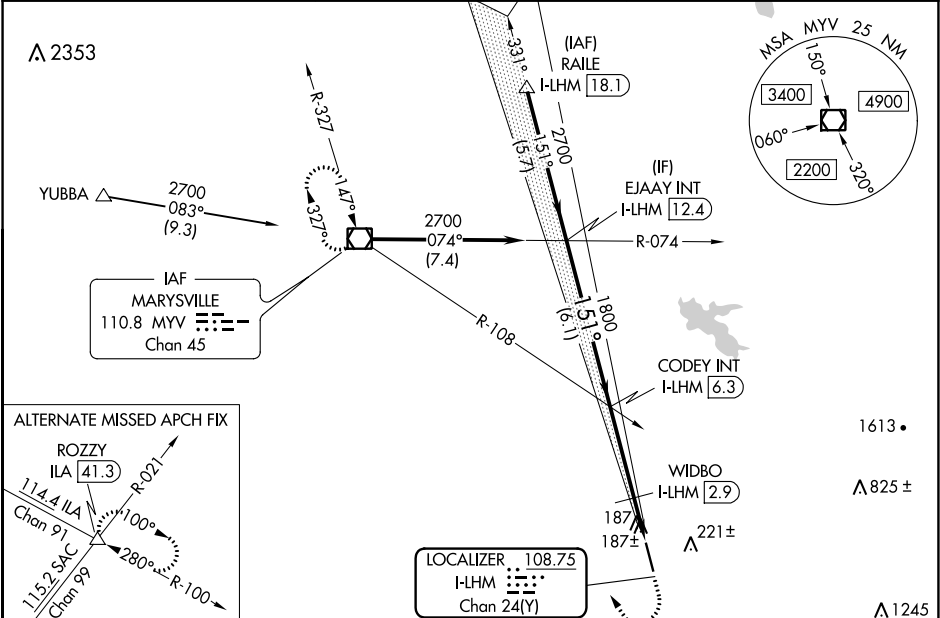
ILS or LOC RWY 15
LINCOLN RGNL/KARL HARDER FIELD (LHM)

NA When local altimeter setting not received, use Beale AFB altimeter setting and increase all DA/MDA 40 feet, and increase S-LOC 15 Cat C/D visibility ¼ mile. VDP NA with Beale AFB altimeter setting. WIDBO fix minimums: for inop ALS, increase S-LOC 15 Cat D visibility to 1 mile.

MAISR

MISSED APPROACH: Climb to 1200 then climbing right turn to 3000 direct MYV VOR/DME and hold.

AWOS-3 124.25	NORCAL APP CON 125.4 259.1	UNICOM 123.0 (CTAF)
-------------------------	--------------------------------------	-------------------------------



EJAAY INT I-LHM 12.4				#640 when using Beale AFB altimeter setting:				1200	3000	MYV
CODEY INT I-LHM 6.3				WIDBO I-LHM 2.9						
2700				1800				* LOC only		
GS 3.00° TCH 46				*#600						
6.1 NM				3.4 NM				0.8 NM		
CATEGORY				A				D		
S-ILS 15				321-½				200 (200-½)		
S-LOC 15				600-½				479 (500-½)		
CIRCLING				600-1				479 (500-¾)		
								600-1		
								479 (500-1)		
								600-1½		
								479 (500-1½)		
								680-2		
								559 (600-2)		