

WAAS CH <b>82618</b> <b>W15A</b>	APP CRS <b>151°</b>	Rwy Idg TDZE <b>121</b> Apt Elev <b>121</b>	<b>6001</b>
--	------------------------	---	-------------

RNAV (GPS) RWY 15

INCOLN RGNL/KARL HARDER FIELD (LHM)

RNP APCH.

▼

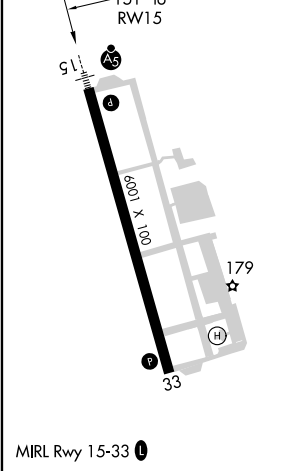
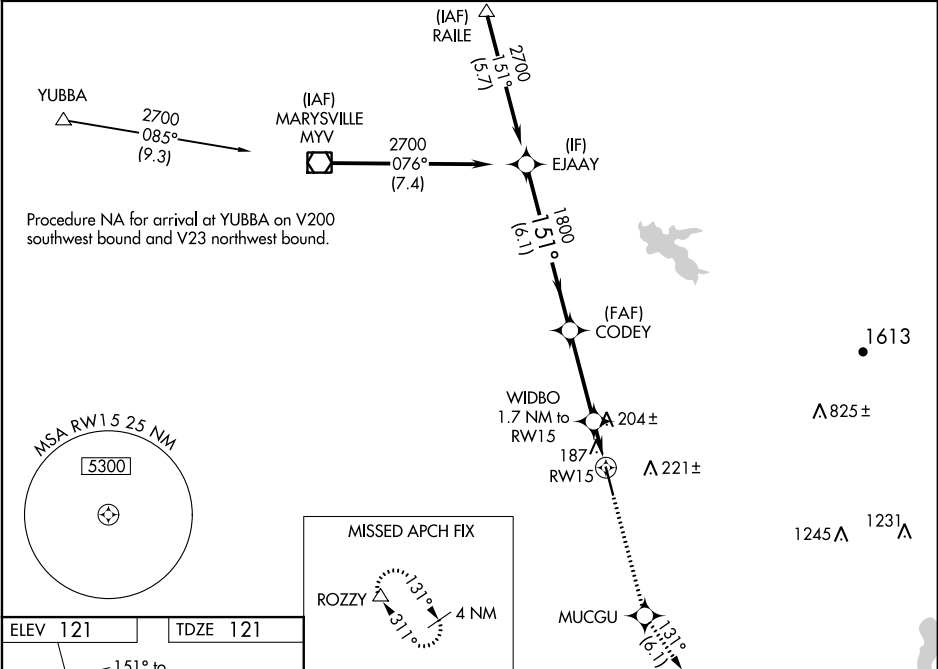
▲

For uncompensated Baro-VNAV systems, LNAV/VNAV NA below -15°C or above 48°C. VDP and Baro-VNAV NA when using Beale AFB altimeter setting. When local altimeter setting not received, use Beale AFB altimeter setting and increase all DA/MDA 40 feet. For inop ALS when using Beale AFB altimeter setting, increase LNAV Cat D visibility to 1¼.

MALSR

MISSED APPROACH:  
Climb to 2500 direct MUCGU and on track 131° to ROZZY and hold.

AWOS-3 <b>124.25</b>	NORCAL APP CON <b>125.4 259.1</b>	UNICOM <b>123.0 (CTAF) 0</b>
-------------------------	--------------------------------------	---------------------------------



<p>EJAAY 2700 151° 1800 CODEY 1800 *680 2500 MUCGU tr 131° ROZZY</p> <p>GP 3.00° TCH 46</p> <p>WIDBO 1.7 NM to RW15 *0.9 NM to RW15 RW15</p> <p>*LNAV only</p> <p>6.1 NM 3.4 NM 0.8 NM 0.9 NM</p>				
CATEGORY	A	B	C	D
LPV DA	321-1/2 200 (200-1/2)			
LNAV/VNAV DA	452-3/4 331 (400-3/4)			
LNAV MDA	460-1/2 339 (400-1/2)			460-1 339 (400-1)
CIRCLING	520-1 399 (400-1)	580-1 459 (500-1)	580-1 1/2 459 (500-1 1/2)	680-2 559 (600-2)