

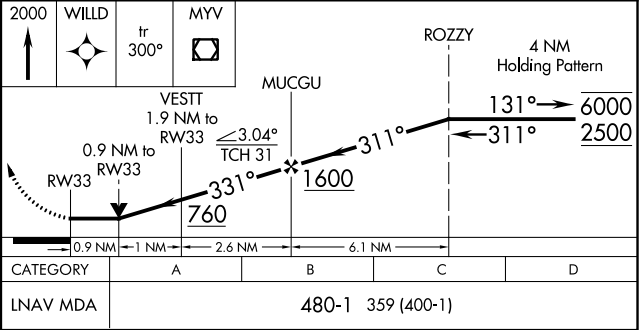
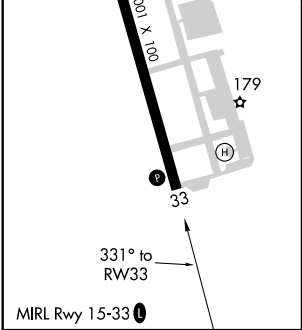
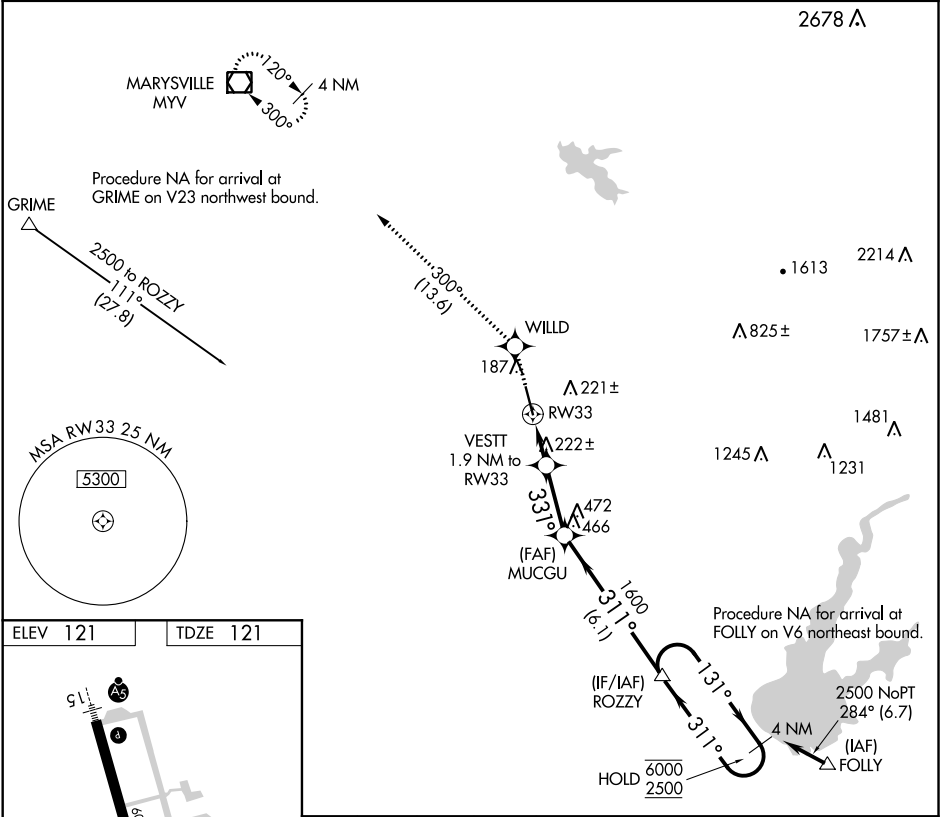
APP CRS	Rwy Idg	6001
331°	TDZE	121
	Apt Elev	121

RNAV (GPS) RWY 33

LINCOLN RGNL/KARL HARDER FIELD (LHM)

RNP APCH.	MISSED APPROACH: Climb to 2000 direct WILLD and on track 300° to MYV VOR/DME and hold.
Rwy 33 helicopter visibility reduction below ¾ SM NA. When local altimeter setting not received, use Beale AFB altimeter setting and increase all MDA 40 feet, and increase LNAV Cat C/D visibility ½ mile. VDP NA with Beale AFB altimeter setting.	

AWOS-3 124.25	NORCAL APP CON 125.4 259.1	UNICOM 123.0 (CTAF) 0
------------------	-------------------------------	--------------------------



SW-2, 03 DEC 2020 to 31 DEC 2020

SW-2, 03 DEC 2020 to 31 DEC 2020