

WAAS
CH **58319**
W34A

APP CRS
344°

Rwy Idg
TDZE **100**
Apt Elev **100**

RNAV (GPS) RWY 34

YOLO COUNTY (DWA)

RNP APCH.

▼

▲ NA

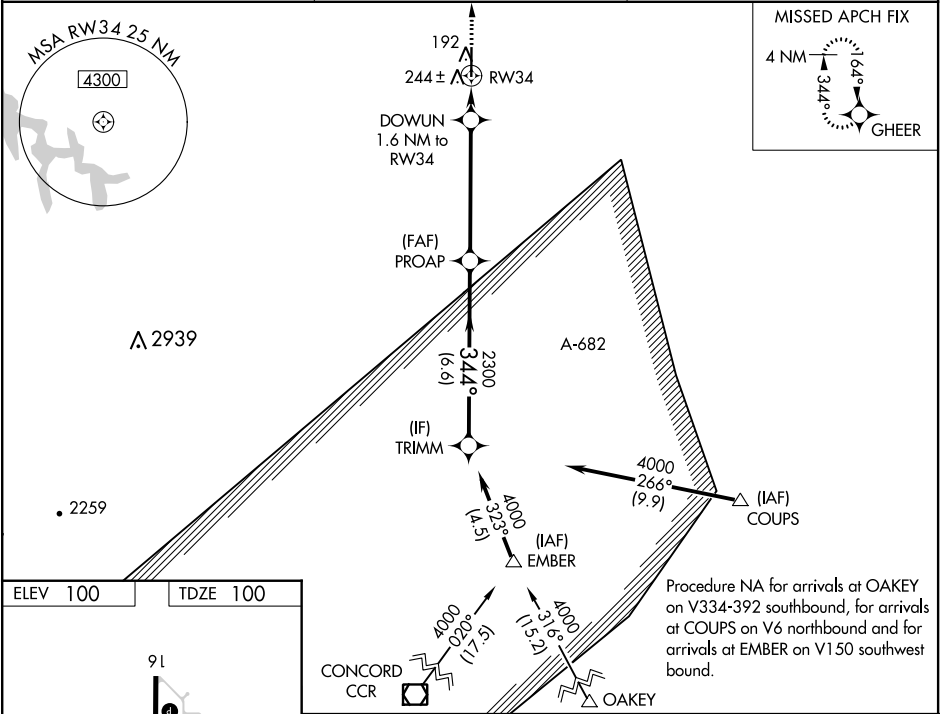
When local altimeter setting not received, use Travis AFB altimeter setting and increase all DA 50 feet and all MDA 60 feet, and increase LPV visibility all Cats ¼ mile, LNAV/VNAV visibility all Cats ¼ mile, and LNAV Cat C and D visibility ¼ mile. For uncompensated Baro-VNAV systems, LNAV/VNAV NA below -15°C (5°F) or above 42°C (107°F). Baro-VNAV NA when using Travis AFB altimeter setting.

MISSED APPROACH: Climb to 3000 direct GHEER and hold.

AWOS-3P
125.775

TRAVIS APP CON
126.6 281.45

UNICOM
123.0 (CTAF) 0



ELEV 100 TDZE 100

91
100 X 1000
34
344° to RW34
MIRL Rwy 16-34

TRIMM
4000
GP 3.00° TCH 58
PROAP
2300
DOWUN 1.6 NM to RW34
RW34
*660
3000
GHEER
*LNAV only

VGSI and RNAV glidepath not coincident (VGSI Angle 3.00/TCH 40).

CATEGORY	A	B	C	D
LPV DA	415-1 315 (400-1)			
LNAV/VNAV DA	425-1 325 (400-1)			
LNAV MDA	500-1 400 (400-1)		500-1½ 400 (400-1½)	