

HERLONG, CALIFORNIA

RNAV (GPS) RWY 27

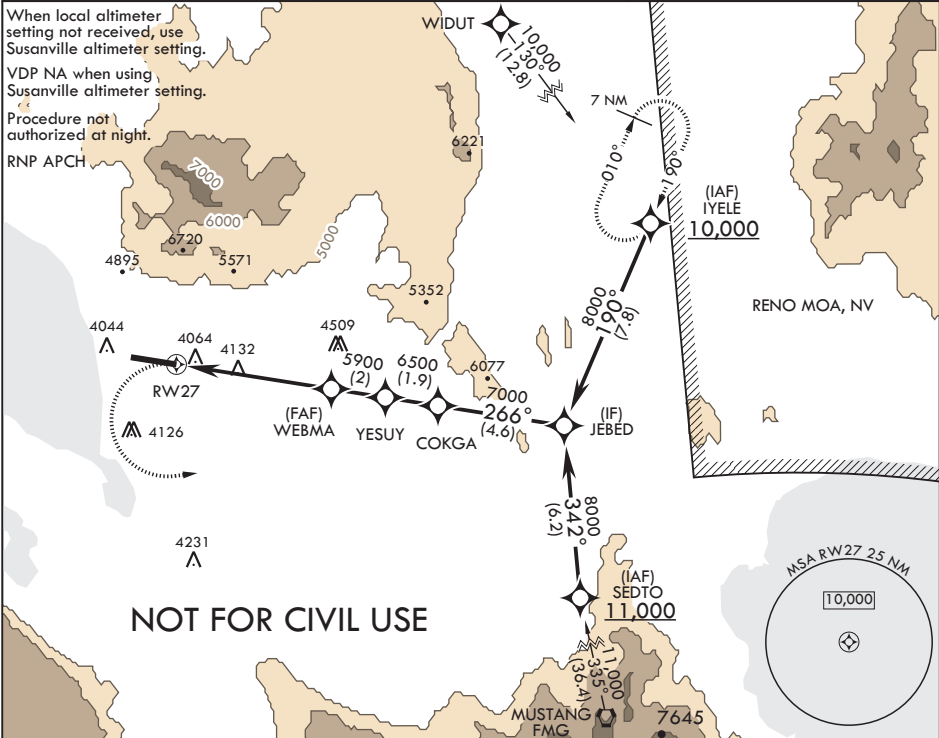
APCH CRS	Rwy Idg	10,000
266°	TDZE	4012
	Arpt Elev	4012

AL-6624 (USA)

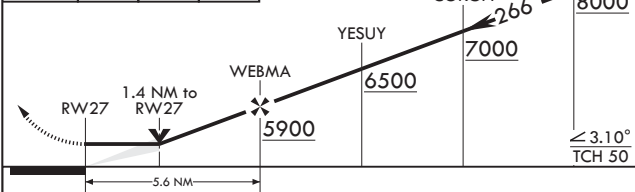
AMEDEE AAF (KAHC)

NA * Circling NA for CAT CD north of Rwy 9-27. MISSED APPROACH: Climbing left turn to 10,000 direct JEBED and track 010° to IYELE and hold, continue climb-in-hold to 10,000. When authorized by ATC, climb-in-hold to 14,000.

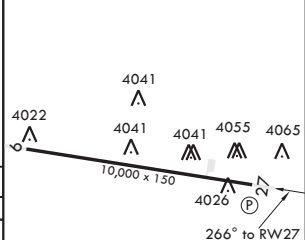
AWOS-3 118.825	OAKLAND CENTER 128.8 285.5	CTAF 126.2 241.9
-------------------	-------------------------------	---------------------



10,000	JEBED	tr 010°	IYELE	VGSI and descent angles not coincident (VGSI Angle 3.00/TCH 87).	JEBED	ELEV 4012	TDZE 4012
--------	-------	---------	-------	--	-------	-----------	-----------



CATEGORY	A	B	C	D
LNAV MDA	4540-1 528 (600-1)	4540-1½ 528 (600-1½)	4540-1½ 528 (600-1½)	4540-1 528 (600-1)
CIRCLING	4540-1 528 (600-1)	4680-1 668 (700-1)	4680-1¾ 668 (700-1¾)	4680-2 668 (700-2)
SUSANVILLE ALTIMETER SETTING MINIMUMS				
LNAV MDA	4620-1 608 (700-1)	4620-2 608 (700-2)	4620-2 608 (700-2)	4620-1 608 (700-1)
CIRCLING	4620-1 608 (700-1)	4760-1 748 (800-1)	4760-2¼ 748 (800-2¼)	4760-2½ 748 (800-2½)



HERLONG, CALIFORNIA

40°16'N - 120°09'W

AMEDEE AAF (KAHC)

Amndt 2 30JAN20

RNAV (GPS) RWY 27

SW-2, 03 DEC 2020 to 31 DEC 2020

SW-2, 03 DEC 2020 to 31 DEC 2020