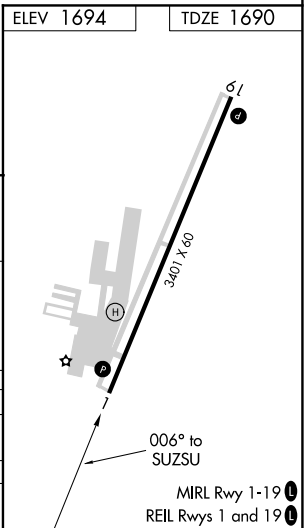
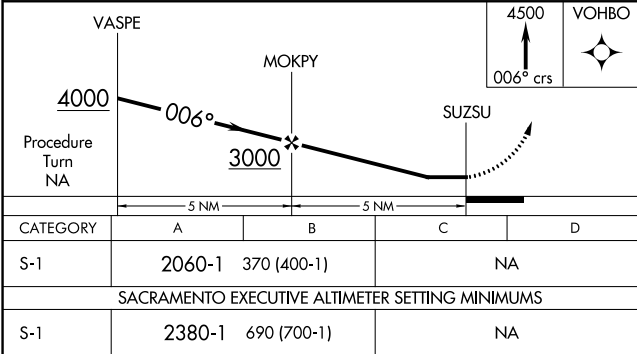
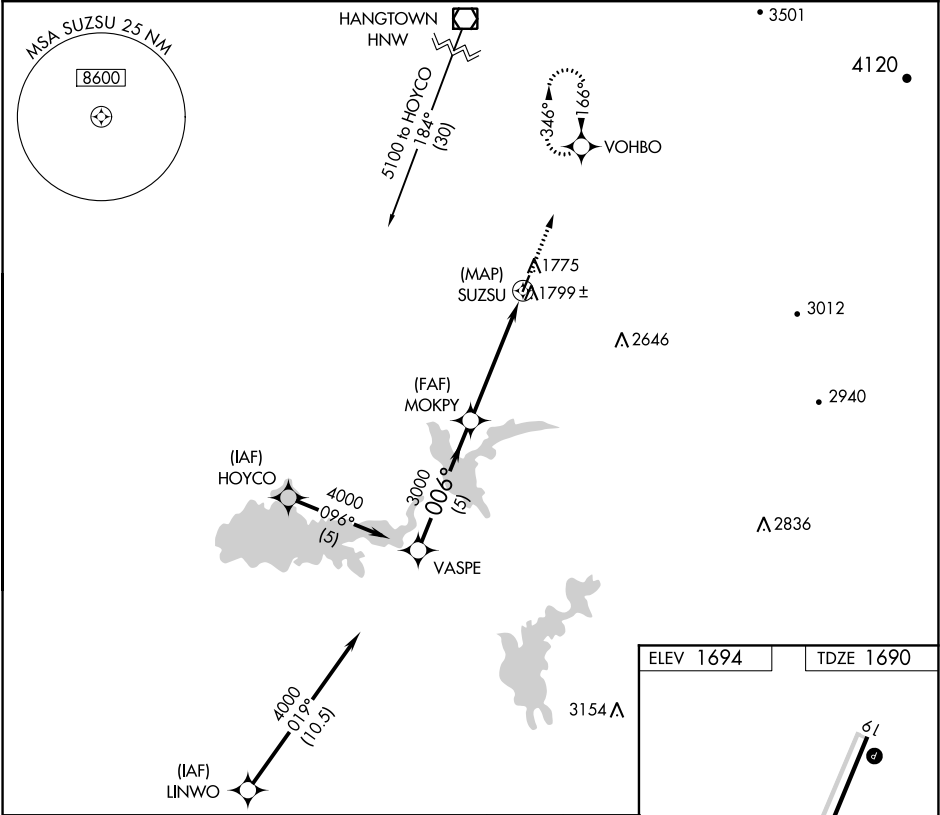


APP CRS	Rwy Idg	3401
006°	TDZE	1690
	Apt Elev	1694

GPS RWY 1  
WESTOVER FIELD AMADOR COUNTY (JAQ)

<div>▼ ▲NA</div>	When local altimeter setting not received, use Sacramento Executive altimeter setting.	MISSED APPROACH: Climb to 4500 on 006° course to VOHBO and hold.
----------------------	--	--

AWOS-3 121.125	NORCAL APP CON 125.1 363.2	UNICOM 123.075 (CTAF) 0
-------------------	-------------------------------	----------------------------



SW-2, 03 DEC 2020 to 31 DEC 2020

SW-2, 03 DEC 2020 to 31 DEC 2020