

VOR/DME LIN	APP CRS	Rwy Idg	3401
114.8	012°	TDZE	1690
Chan 95		Apt Elev	1694

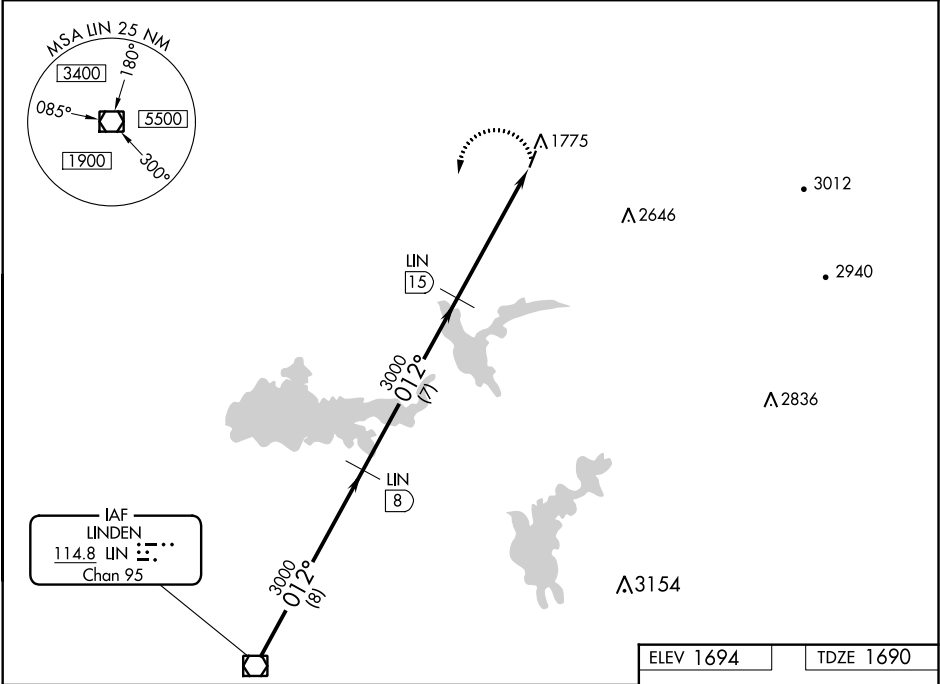
VOR/DME RWY 1  
WESTOVER FIELD AMADOR COUNTY (JAQ)

**NA**

If local altimeter not received, use Sacramento Executive altimeter setting.

MISSED APPROACH: Climbing left turn to 3000 via LIN R-012 to LIN VOR/DME.

AWOS-3 121.125	NORCAL APP CON 125.1 363.2	UNICOM 123.075 (CTAF) <b>0</b>
-------------------	-------------------------------	-----------------------------------



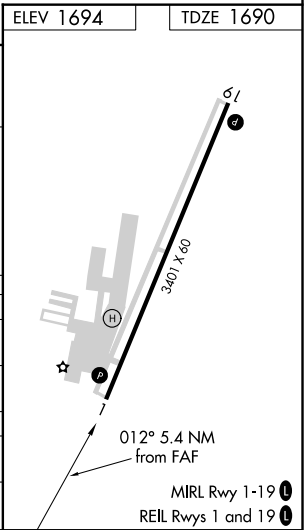
Obstacle clearance diagram showing a flight path with the following segments and distances:

- Horizontal segment from 3000 feet to LIN 8: 8 NM
- Horizontal segment from LIN 8 to LIN 15: 7 NM
- Descent segment from LIN 15 to LIN 20.4: 5.4 NM

Obstacle information:

- Obstacle 3000 R-012 is located in the upper right corner.
- Procedure Turn NA is indicated.

CATEGORY	A	B	C	D
S-1	2080-1 390 (400-1)	2080-1¼ 390 (400-1¼)	NA	
CIRCLING	2200-1 506 (600-1)	2200-1¼ 506 (600-1¼)	NA	
SACRAMENTO EXECUTIVE ALTIMETER SETTING MINIMUMS				
S-1	2380-1 690 (700-1)	2380-1¼ 690 (700-1¼)	NA	
CIRCLING	2520-1 826 (900-1)	2520-1¼ 826 (900-1¼)	NA	



SW-2, 03 DEC 2020 to 31 DEC 2020

SW-2, 03 DEC 2020 to 31 DEC 2020