

VOR/DME VIS	APP CRS	Rwy Idg	3901
109.4	133°	TDZE	265
Chan 31		Apt Elev	265

VOR RWY 13

MEFFORD FIELD (TLR)

DME required.

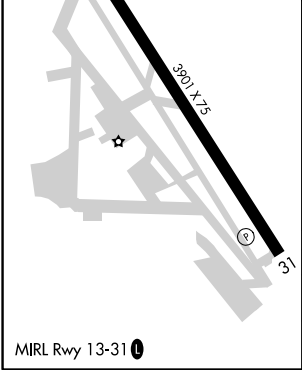
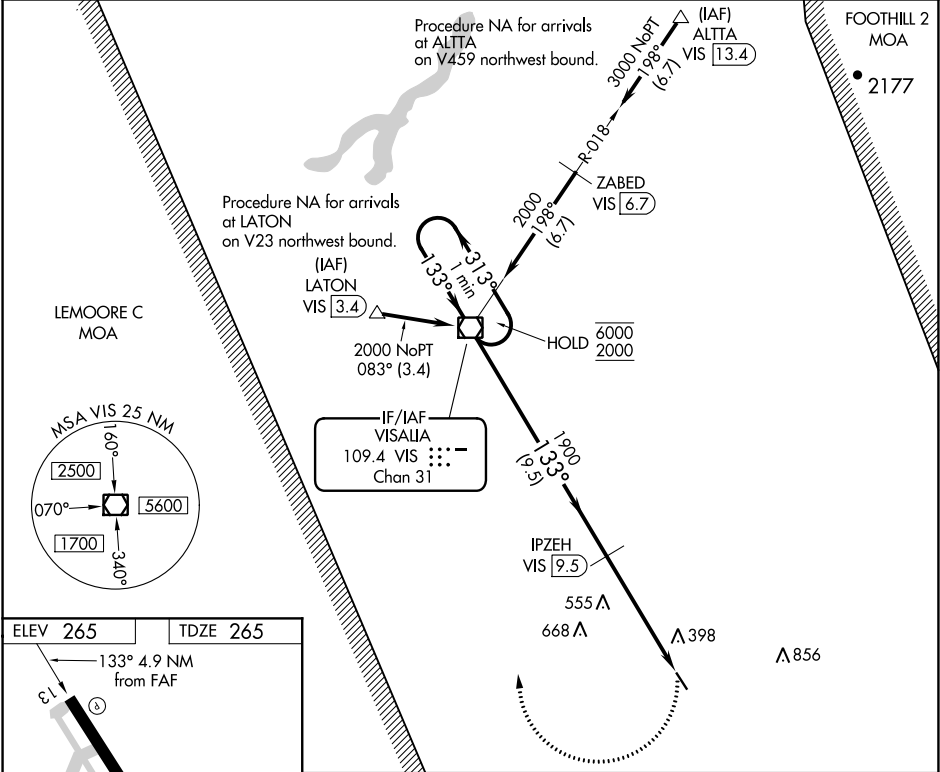
▼

NA

Circling Rwy 31 NA at night. Rwy 13 helicopter visibility reduction below ¾ SM NA. When local altimeter setting not received, use Visalia altimeter setting and increase all MDA 40 feet and increase Cat C visibilities ½ SM. VDP NA with Visalia altimeter setting.

MISSED APPROACH: Climbing right turn to 2000 direct VIS VOR/DME and hold.

AWOS-3PT 120.0	FRESNO APP CON 118.5 268.7	UNICOM 122.7 (CTAF) 0
-------------------	-------------------------------	--------------------------



One Minute Holding Pattern		VIS VOR/DME	IPZEH VIS 9.5	2000	VIS
6000 ← 313°		133° →	133°	3.06° TCH 42	VIS 12.8
2000			1900		VIS 14.4
		9.5 NM	3.3 NM	1.6 NM	
CATEGORY	A	B	C	D	
S-13	820-1	555 (600-1)	820-1½ 555 (600-1½)	NA	
CIRCLING	820-1	555 (600-1)	820-1½ 555 (600-1½)	NA	