

APP CRS	Rwy Idg	2621
297°	TDZE	5
	Apt Elev	5

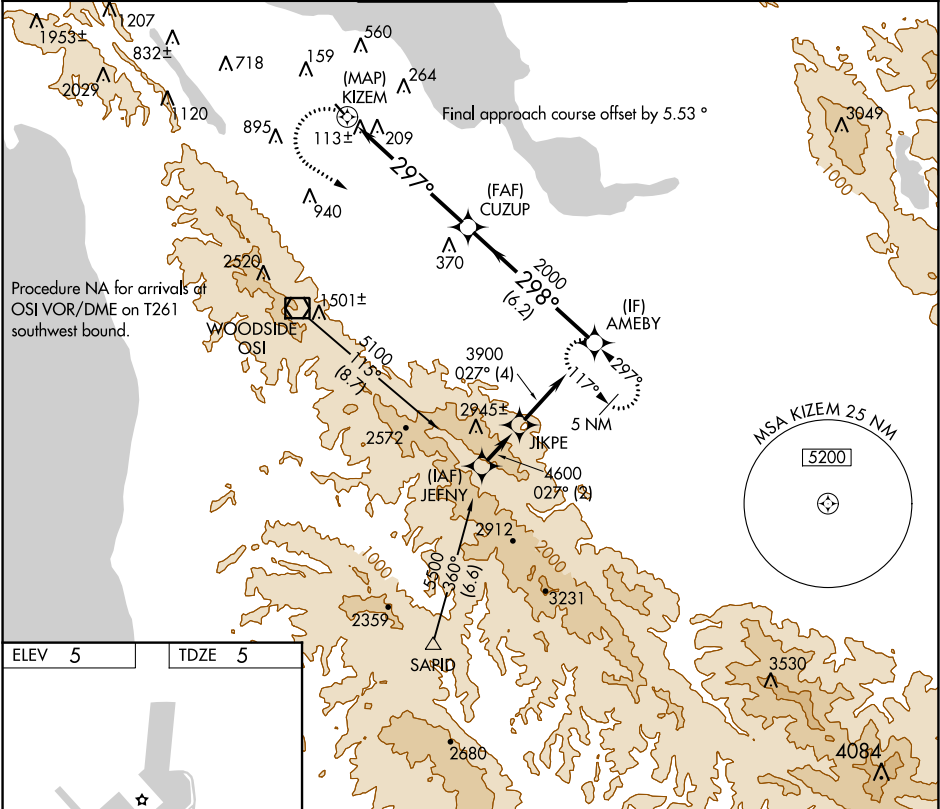
RNAV (GPS) Y RWY 30
SAN CARLOS (SQL)

⚠ DME/DME RNP-0.3 NA. When local altimeter setting not received, use San Francisco Intl altimeter setting and increase all MDA 40 feet.

⚠ Rwy 30 visibility reduction by helicopters below 1 SM NA. Circling NA west of Rwy 12-30.

MISSED APPROACH: Climbing left turn to 5400 direct AMEBY and hold, continue climb-in-hold to 5400.

ATIS	NORCAL APP CON	SAN CARLOS TOWER ★	GND CON	UNICOM
125.9	133.95 317.6	119.0 (CTAF) 0 326.2	121.6	122.95



ELEV	5
TDZE	5

REIL Rwy 12 and 30
MIRL Rwy 12-30

5400 AMEBY

VGSI and descent angles not coincident (VGSI Angle 3.00/TCH 25).

AMEBY

CUZUP

KIZEM

3.05° TCH 40

297°

2000

298°

3900

0.1 5.9 NM 6.2 NM

CATEGORY	A	B	C	D
LNAV MDA	1260-1 ¼	1255 (1300-1 ¼)	NA	
CIRCLING	1260-1 ¼	1260-1 ½	NA	

SW-2, 03 DEC 2020 to 31 DEC 2020

SW-2, 03 DEC 2020 to 31 DEC 2020