
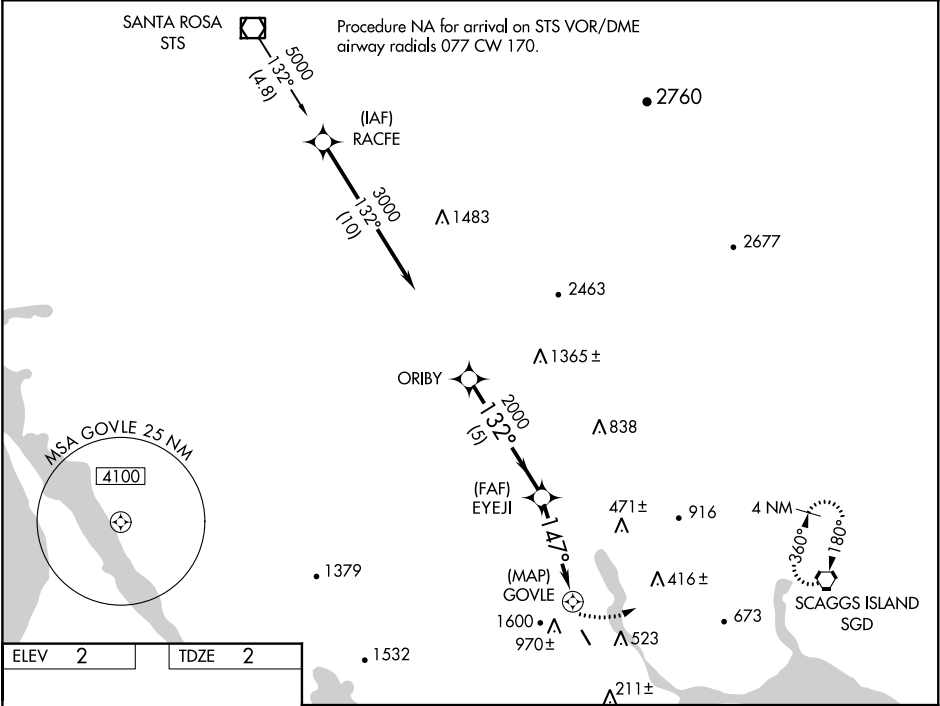


APP CRS	Rwy Idg	3300
147°	TDZE	2
	Apt Elev	2

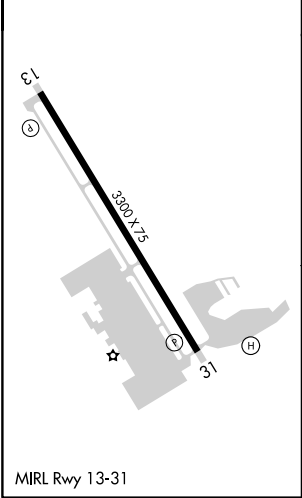
GPS RWY 13
GNOSS FIELD (DVO)

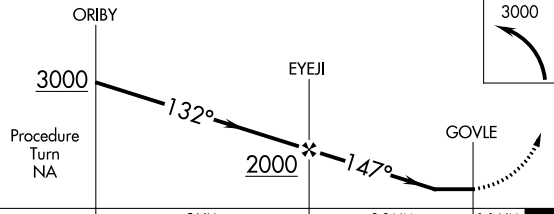
 NA	Circling NA west of Rwy 13-31. When local altimeter not received, use Napa altimeter setting and increase all MDAs 40 feet. If neither is received procedure is NA. Rwy 13 helicopter visibility reduction below 3/4 SM NA.	MISSED APPROACH: Climbing left turn to 3000 direct SGD VORTAC and hold.
--	---	--

AWOS-3P 120.675	OAKLAND CENTER 127.8 353.5	UNICOM 123.075 (CTAF)
--------------------	-------------------------------	--------------------------



ELEV 2	TDZE 2
--------	--------



			
CATEGORY	A	B	C D
S-13	1000-1¼ 998 (1000-1¼)	1000-1½ 998 (1000-1½)	NA
CIRCLING	1000-1¼ 998 (1000-1¼)	1000-1½ 998 (1000-1½)	NA
NAPA ALTIMETER SETTING MINIMUMS			
S-13	1040-1¼ 1038 (1100-1¼)	1040-1½ 1038 (1100-1½)	NA
CIRCLING	1040-1¼ 1038 (1100-1¼)	1040-1½ 1038 (1100-1½)	NA

SW-2, 03 DEC 2020 to 31 DEC 2020

SW-2, 03 DEC 2020 to 31 DEC 2020