

WAAS CH 78418 W12A	APP CRS 121°	Rwy Idg 10849 TDZE 510 Apt Elev 510
--	------------------------	--

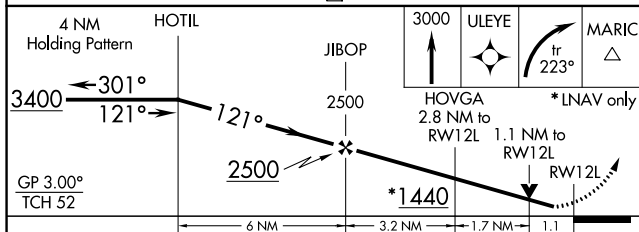
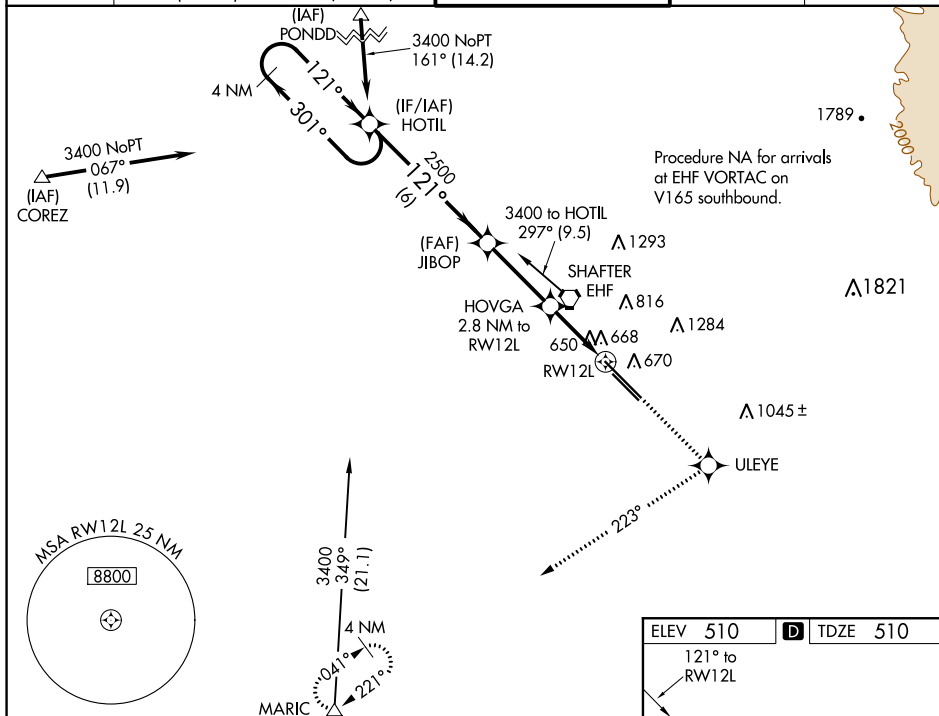
RNAV (GPS) RWY 12L
MEADOWS FIELD (BFL)

RNP APCH.

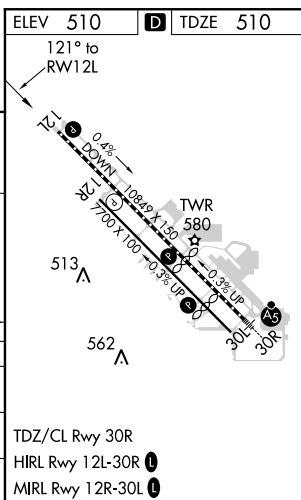
▼ Baro-VNAV NA when using Porterville altimeter setting. For uncompensated Baro-VNAV systems, LNAV/VNAV NA below -16°C or above 54°C. Rwy 12L helicopter visibility reduction below ¾ SM NA. When local altimeter setting not received, use Porterville altimeter setting and increase all DA 92 feet, all MDA 100 feet, increase LPV all Cats, LNAV/VNAV all Cats and LNAV Cats C/D visibility ¼ mile.

MISSED APPROACH:
Climb to 3000 direct
ULEYE and right turn
on track 223° to
MARIC and hold.

ATIS 118.6	BAKERSFIELD APP CON ★ 118.8 284.625 (SOUTH)	BAKERSFIELD TOWER ★ 118.1 (CTAF) 0 257.8 (NORTH)	GND CON 121.7	UNICOM 122.95
----------------------	--	---	-------------------------	-------------------------



CATEGORY		A	B	C	D
LPV	DA	760-1 250 (300-1)			
LNAV/ VNAV	DA	1073-2 563 (600-2)			
LNAV	MDA	920-1 410 (500-1)		920-1¼ 410 (500-1¼)	



RNAV (GPS) RWY 12L