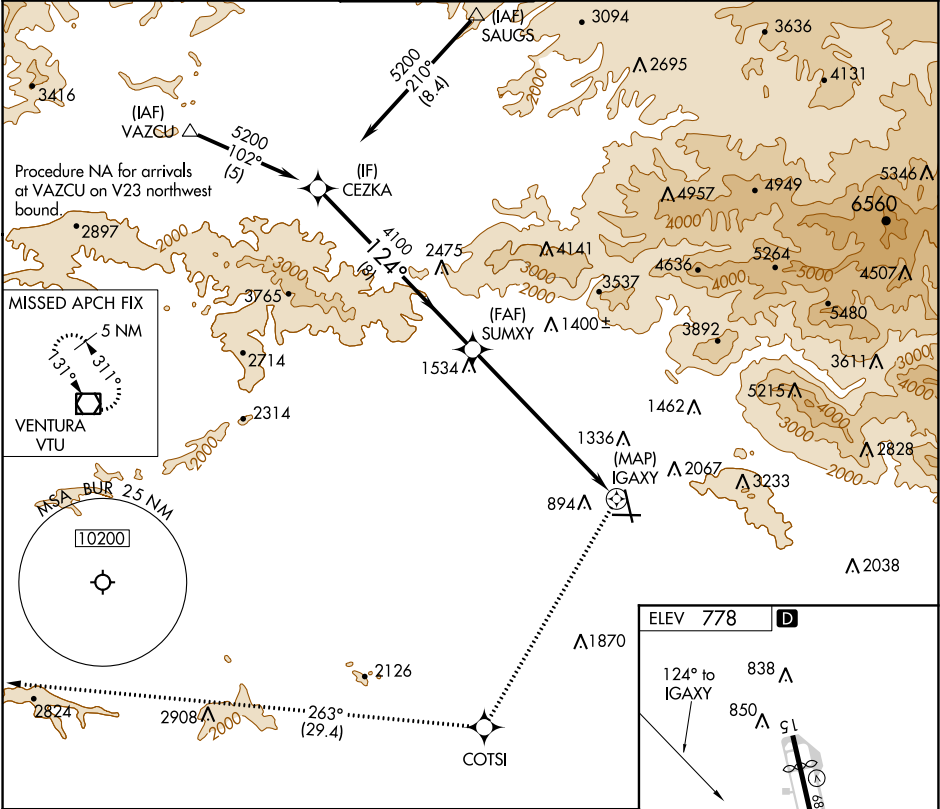


APP CRS	Rwy Idg	N/A
124°	TDZE	N/A
	Apt Elev	778

RNAV (GPS)-A  
BOB HOPE (BUR)

RNP APCH.	MISSED APPROACH: Climbing right turn to 4600 direct COTS1 on track 263° to VTU VOR/DME and hold.
▼ Circling NA for Cats A/B/C northeast of Rws 15 and 26. Circling NA for Cat D east of Rwy 15-33. Circling Rwy 26 NA at night and Circling Rwy 33 NA at night for Cat D. Circling to Rwy 8, 33 at night, operational VGS1 required, remain on or above VGS1 glidepath until threshold.	

D-ATIS 134.5	SOCAL APP CON 120.4 360.6 (NORTH) 134.2 338.2 (WEST)	BURBANK TOWER 118.7 254.3	GND CON 123.9 348.6	CLNC DEL 118.0 348.6	CPDLC
-----------------	--	------------------------------	------------------------	-------------------------	-------



CEZKA	5200	124°	SUMXY	4100	IGAXY	894	1336	2067	3233	2038
8 NM		7.4 NM								
CATEGORY	A	B	C	D						
◼ CIRCLING	1860-1¼ 1082 (1100-1¼)	1860-1½ 1082 (1100-1½)	2240-3 1462 (1500-3)	2320-3 1542 (1600-3)						
					MIRL Rwy 15-33 HIRL Rwy 8-26 REIL Rws 15, 26 and 33					

SW-3, 03 DEC 2020 to 31 DEC 2020

SW-3, 03 DEC 2020 to 31 DEC 2020