

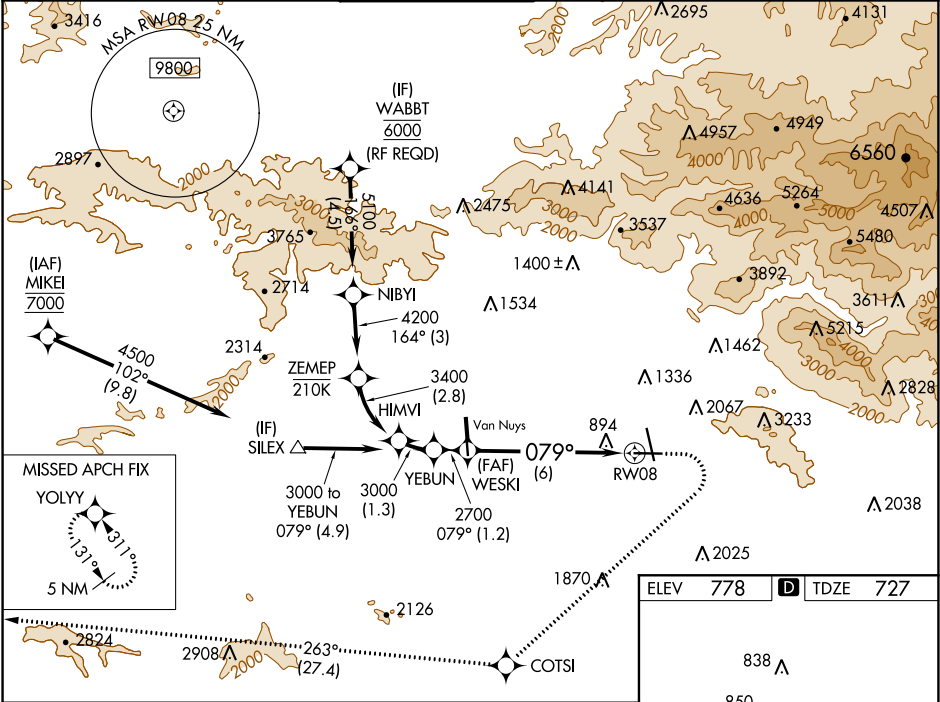
APP CRS	Rwy Idg	5801
079°	TDZE	727
	Apt Elev	778

RNAV (RNP) Y RWY 8

BOB HOPE (BUR)

RNP AR APCH.	MALSR	MISSED APPROACH: Climb to 1200 then climbing right turn to 4600 direct COTS and on track 263° to YOLYY and hold. *Missed approach requires minimum climb of 340 feet per NM to 2400. #Missed approach requires minimum climb of 317 feet per NM to 2400.
For uncompensated Baro-VNAV systems, procedure NA below 1°C or above 54°C. Straight-in Rwy 8 at night, operational VGSI required, remain on or above VGSI glidepath until threshold. Inop table does not apply to RNP 0.20* and RNP 0.30. For inop ALS, increase RNP 0.30* all Cats visibility to 1 1/4 SM.		

D-ATIS	SOCAL APP CON	BURBANK TOWER	GND CON	CLNC DEL	CPDLC
134.5	120.4 360.6 (NORTH) 134.2 338.2 (WEST)	118.7 254.3	123.9 348.6	118.0 348.6	



VGSI and RNAV glidepath not coincident (VGSI Angle 3.00/TCH 72).				1200	4600	COTS	YOLYY
YEBUN				3000	2700	tr 263°	
GP 3.00° TCH 60				See planview for multiple IF locations.			
1.2 NM				6 NM			
CATEGORY	A	B	C	D			
RNP 0.20 DA*		1068/50	341 (300-1)				
RNP 0.30 DA#		1151/50	424 (400-1)				
RNP 0.30 DA		1485-2½	758 (800-2½)				
AUTHORIZATION REQUIRED							

Diagram showing a glidepath from 3000 to 2700 feet, a 079° angle, and a 1.2 NM distance. Includes a planview for multiple IF locations and a diagram of the runway (RW08) with a 079° to RW08 angle.

Diagram showing a runway (RW08) with a 079° to RW08 angle, a 1.2 NM distance, and a 0.5% UP slope. Includes a diagram of the runway (RW08) with a 079° to RW08 angle.

MIRL Rwy 15-33
HIRL Rwy 8-26
REIL Rwys 15, 26 and 33