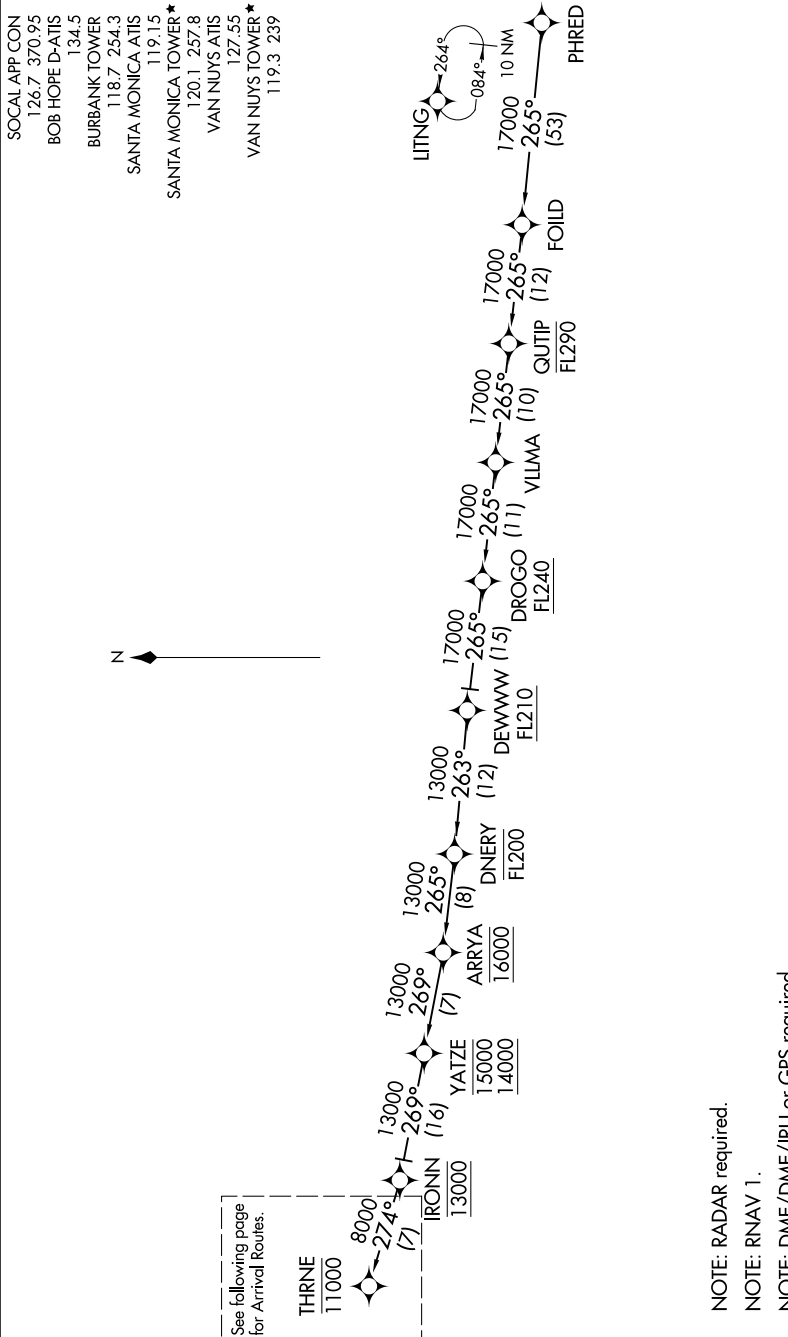


SW-3, 03 DEC 2020 to 31 DEC 2020



PHRED TRANSITION (PHRED.THRNE3)

- NOTE: RADAR required.
- NOTE: RNAV 1.
- NOTE: DME/DME/IRU or GPS required.
- NOTE: Turbojet and turboprop aircraft only.
- NOTE: Expect local area altimeter setting reaching FL200.
- NOTE: Chart not to scale.

(CONTINUED ON FOLLOWING PAGE)

SW-3, 03 DEC 2020 to 31 DEC 2020