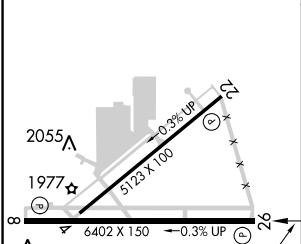
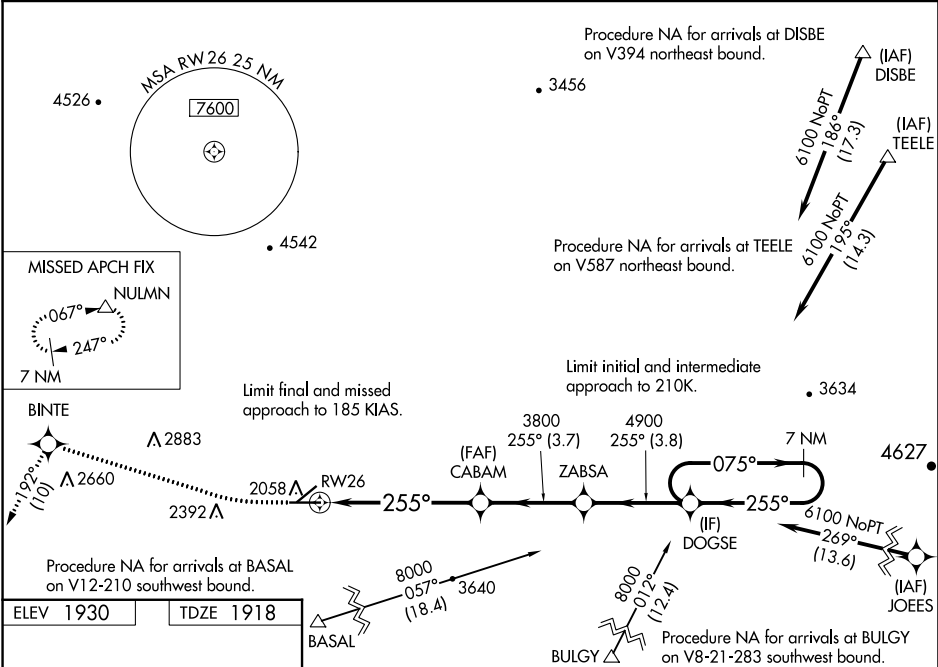


WAAS CH 72813 W26A	APP CRS 255°	Rwy Idg TDZE 1918 Apt Elev 1930
--	------------------------	---

RNAV (GPS) RWY 26
BARSTOW-DAGGETT (DAG)

RNP APCH. ▼ For uncompensated Baro-VNAV systems, LNAV/VNAV NA below -4°C or above 54°C. Circling NA for Cat D south of Rwy 8-26. Rwy 26 helicopter visibility reduction below ¾ SM NA. ⚠ Missed approach requires a minimum climb of 220 feet per NM to 8000.	MISSED APPROACH: Climb to 2600 on heading 255° then climb to 8000 direct BINTE and on track 192° to NULMN and hold, continue climb-in-hold to 8000.
---	---

ASOS 132.175	LOS ANGELES CENTER 132.5 284.7	UNICOM 123.0 (CTAF) 0
------------------------	--	---------------------------------



ELEV 1930	TDZE 1918
MIRL Rwy 4-22 and 8-26 0	
CIRCLING	
MIRL Rwy 4-22 and 8-26 0	

CATEGORY	A	B	C	D
LPV DA#	2222-1	304 (300-1)		
LPV DA	2343-1 ¾	425 (500-1 ¾)		
LNAV/VNAV DA	2389-1 ½	471 (500-1 ½)		
LNAV MDA	2540-1	622 (700-1)	2540-1 ¾	622 (700-1 ¾)
CIRCLING	2640-1 710 (800-1)	2860-1 ¼ 930 (1000-1 ¼)	3500-3	1570 (1600-3)

SW-3, 03 DEC 2020 to 31 DEC 2020

SW-3, 03 DEC 2020 to 31 DEC 2020