

DIRBY ONE ARRIVAL (RNAV)

AL-237 (FAA)

SW-3, 03 DEC 2020 to 31 DEC 2020

ARRIVAL ROUTE DESCRIPTION

RDHOT TRANSITION (RDHOT.DIRBY1)

TILTT TRANSITION (TILTT.DIRBY1)

From DIRBY on track 082° to cross PHUNN at or below 14000, then on track 034° to cross SHHOW at or below 12000, then on track 346° to cross ZAPPP at or above 9000, then on track 346° to cross BUJIE at or below 8000, then on track 332° to cross SIJ VORTAC at 7000 and at 210K, then on track 326° to cross TRNDO at 5000 and at 210K. Expect RADAR vectors to ILS or RNAV (RNP) Z RWY 25L final approach course.

LOST COMMUNICATIONS

In the event of lost communications: RNP arrivals proceed on the RNAV (RNP) Z RWY 25L approach. All other aircraft proceed on the ILS or LOC RWY 25L.

D-ATIS ARR
133.8
SOCAL APP CON
127.4 387 025
LOS ANGELES TOWER
133.9 239.3 (N)
120.95 379.1 (S)

RDHOT

17000
164°
(54)

17000
126°
(33)

TILTT

ZIPRR

17000
134°
(25)

WURLL

TCUPS

17000
134°
(44)

17000
109°
(21)

RUKKI

FL210

BAUBB

17000
109°
(38)

16000
118°
(21)

DIRBY

FL190 280K
FL190 16000

PHUNN

14000

SHHOW

12000

ZAPPP

9000

BUJIE

8000

SIJ

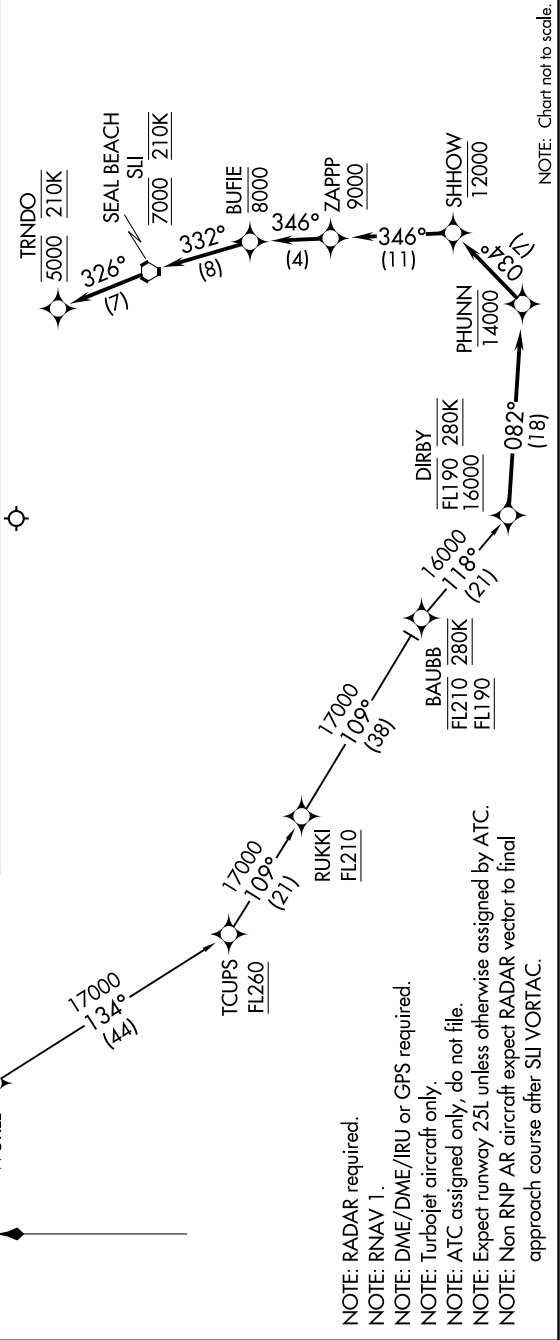
7000 210K

SEAL BEACH

7000 210K

TRNDO

5000 210K



DIRBY ONE ARRIVAL (RNAV)

SW-3, 03 DEC 2020 to 31 DEC 2020