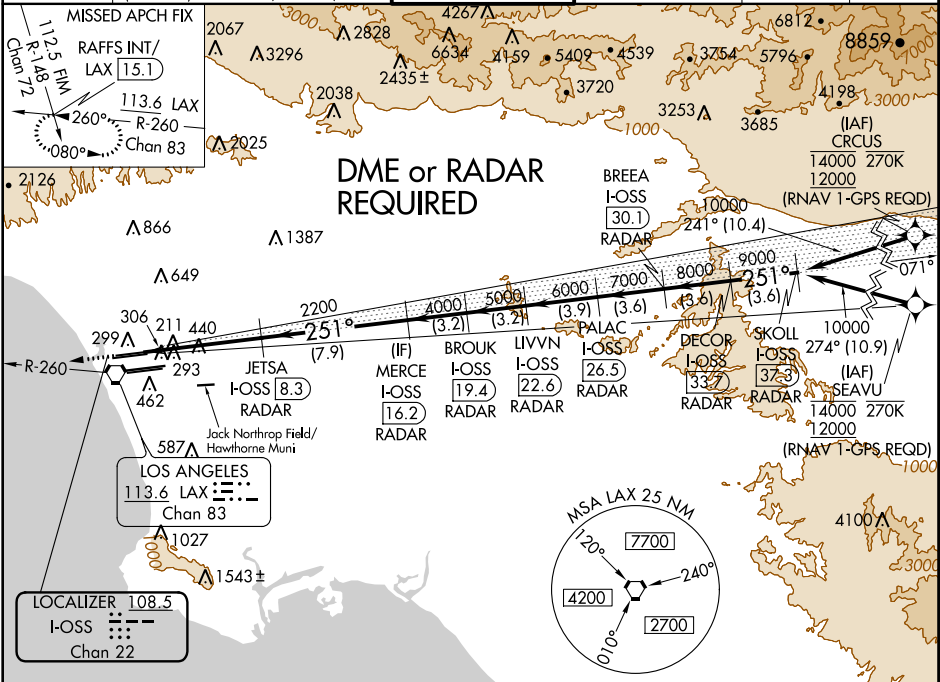


LOC/DME I-OSS 108.5 Chan 22	APP CRS 251°	Rwy Idg TDZE 122 Apt Elev 128	8926
---	------------------------	---	-------------

ILS RWY 24R (CAT II & III)
LOS ANGELES INTL (LAX)

▼ DME or RADAR required. Simultaneous approach authorized. Simultaneous approach authorized with HHR.	ALSF-2	MISSED APPROACH: Climb to 2000 on heading 251° and LAX VORTAC R-260 to RAFFS INT/LAX 15.1 DME and hold.
--	--------	---

D-ATIS ARR 133.8 DEP 135.65	SOCAL APP CON 124.3 363.2 (APCH FM WEST) 124.5 235.975 (225°-044°)	124.9 269.0 (090°-224°) 128.5 360.7 (045°-089°)	LOS ANGELES TOWER N 133.9 239.3 S 120.95 379.1	GND CON N 121.65 327.0 S 121.75 327.0 W 121.4 327.0	CLNC DEL 120.35 327.0	CPDLC
---	--	--	--	---	---	-------



ELEV 128	D	TDZE 122	2000 ↑ hdg 251°		LAX R-260	RAFFS INT	VGSi and ILS glidepath not coincident (VGSi Angle 3.00/TCH 73).		BREEA I-OSS 30.1	DECOR I-OSS 33.7	SKOLL I-OSS 37.3
			JETSA I-OSS 8.3	MERCE I-OSS 19.4	BROUK I-OSS 19.4	LIVVN I-OSS 22.6	PALAC I-OSS 26.5	BREEA I-OSS 30.1	DECOR I-OSS 33.7	SKOLL I-OSS 37.3	
			JETSA I-OSS 8.3	MERCE I-OSS 19.4	BROUK I-OSS 19.4	LIVVN I-OSS 22.6	PALAC I-OSS 26.5	BREEA I-OSS 30.1	DECOR I-OSS 33.7	SKOLL I-OSS 37.3	
			JETSA I-OSS 8.3	MERCE I-OSS 19.4	BROUK I-OSS 19.4	LIVVN I-OSS 22.6	PALAC I-OSS 26.5	BREEA I-OSS 30.1	DECOR I-OSS 33.7	SKOLL I-OSS 37.3	
			JETSA I-OSS 8.3	MERCE I-OSS 19.4	BROUK I-OSS 19.4	LIVVN I-OSS 22.6	PALAC I-OSS 26.5	BREEA I-OSS 30.1	DECOR I-OSS 33.7	SKOLL I-OSS 37.3	
CATEGORY			A		B		C		D		
S-ILS 24R			CAT II RA 118/12 100 DA 222								
S-ILS 24R			CAT III RVR 06								
CATEGORY II & III ILS - SPECIAL AIRCREW & AIRCRAFT CERTIFICATION REQUIRED											

SW-3, 03 DEC 2020 to 31 DEC 2020

SW-3, 03 DEC 2020 to 31 DEC 2020