

| LOC/DME I-MKZ | APP CRS | Rwy Idg | 7R | 7L |
|---------------|-------------|--------------|--------------|------------|
| 109.9 | 071° | 11095 | 11259 | |
| Chan 36 | | TDZE | 128 | 128 |
| | | Apt Elev | 128 | 128 |

ILS or LOC RWY 7R
LOS ANGELES INTL (LAX)

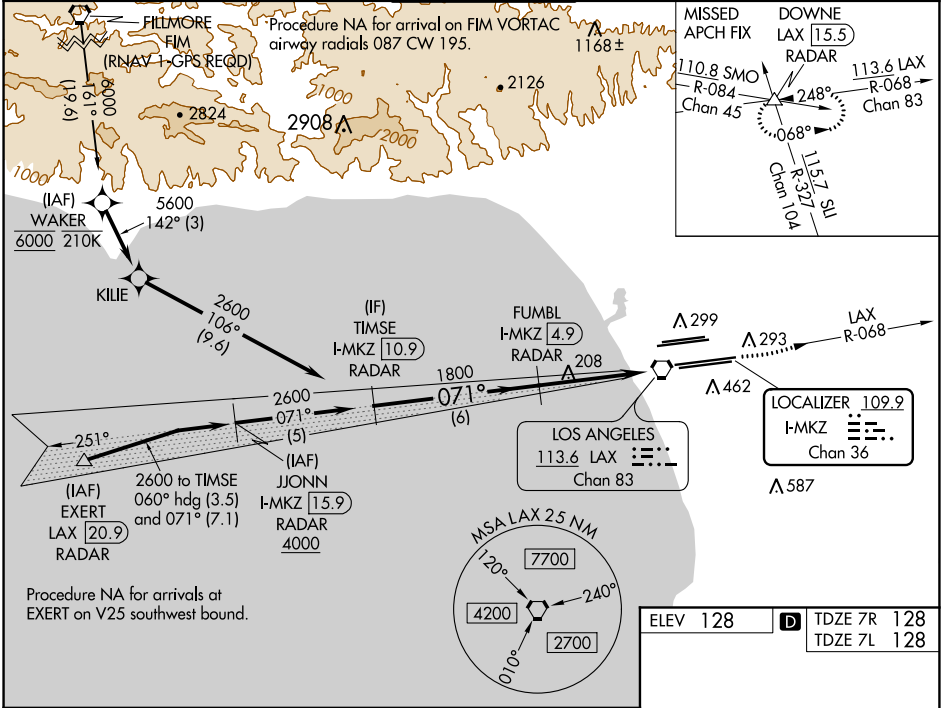
Simultaneous approach authorized. DME or RADAR required.
Inop table does not apply to Sidestep Rwy 7L Cats A and B.
RVR 1800 authorized with use of FD or AP or HUD to DA.

MALSR Rwy 7R

MALSR Rwy 7L

MISSED APPROACH: Climb to 3000 on LAX VORTAC R-068 to DOWNE INT/ LAX 15.5 DME/RADAR and hold.

| | | | | | | |
|---|--|--|--|---|---|-------|
| D-ATIS ARR 133.8 DEP 135.65 | SOCAL APP CON 124.3 363.2 (APCH FM WEST) 124.5 235.975 (225°-044°) | 124.9 269.0 (090°-224°) 128.5 360.7 (045°-089°) | LOS ANGELES TOWER N 133.9 239.3 S 120.95 379.1 | GND CON N 121.65 327.0 S 121.75 327.0 W 121.4 327.0 | CLNC DEL 120.35 327.0 | CPDLC |
|---|--|--|--|---|---|-------|



| | | |
|-------------------------------|-----------------------------|---------------------------------|
| TIMESE I-MKZ 10.9 RADAR | FUMBL I-MKZ 4.9 RADAR | 3000 LAX R-068 DOWNE △ |
| 2600 071° 1800 | * I-MKZ 0.7 I-MKZ 0.2 | * LOC only |
| GS 3.00° TCH 60 | 6 NM | 4.2 NM |
| CATEGORY | A | B |
| S-ILS 7R# | 328/24 | 200 (200-½) |
| S-LOC 7R | 460/24 | 332 (400-½) |
| SIDESTEP 7L | 520/55 | 392 (400-1) |

| | | |
|---|-------------|---------------------|
| ELEV 128 | TDZE 7R 128 | TDZE 7L 128 |
| TDZ/CL Rwy 6R, 7L, 24R, and 25L HIRL all Rwy's | | |
| FAF to MAP 5.1 NM | | |
| Knots | 60 | 90 120 150 180 |
| Min:Sec | 5:06 | 3:24 2:33 2:02 1:42 |

SW-3, 03 DEC 2020 to 31 DEC 2020

SW-3, 03 DEC 2020 to 31 DEC 2020