

APP CRS
251°

Rwy Idg
9483


TDZE
123

Apt Elev
128

RNAV (RNP) Z RWY 24L

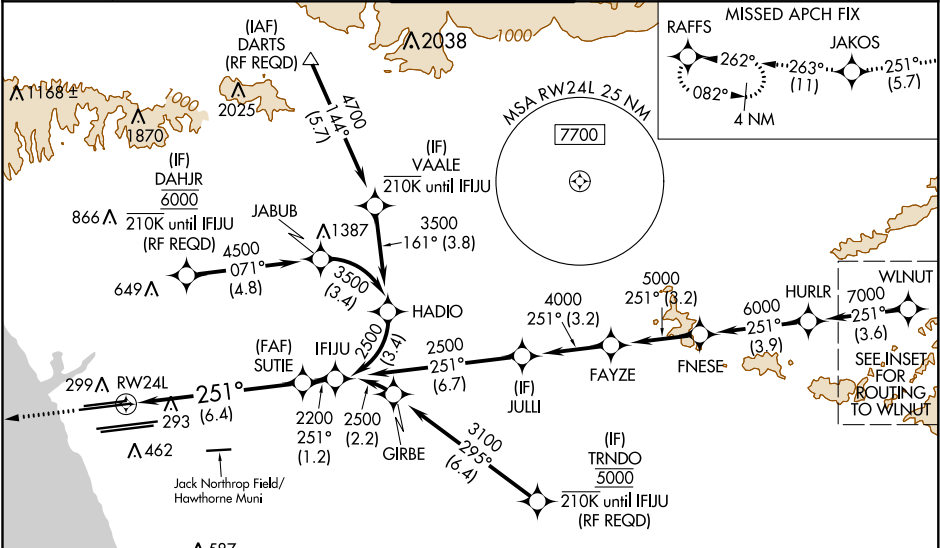
LOS ANGELES INTL (LAX)

▼ For uncompensated Baro-VNAV systems, procedure NA below 5°C (41°F) or above 54°C (130°F). Simultaneous approach authorized. Simultaneous approach authorized with KHHH. GPS required. For inop ALS, increase RNP 0.15 all Cats visibility to 1½ SM.

MALSR


MISSED APPROACH: Climb to 2000 on track 251° to JAKOS and track 263° to RAFFS and hold.

D-ATIS ARR 133.8 DEP 135.65	SOCAL APP CON 124.3 363.2 124.9 269.0 (APCH FM WEST) (090°-224°) 124.5 235.975 128.5 360.7 (225°-044°) (045°-089°)	LOS ANGELES TOWER N 133.9 239.3 S 120.95 379.1	GND CON N 121.65 327.0 S 121.75 327.0 W 121.4 327.0	CLNC DEL 120.35 327.0	CPDLC
---	--	--	---	---	-------

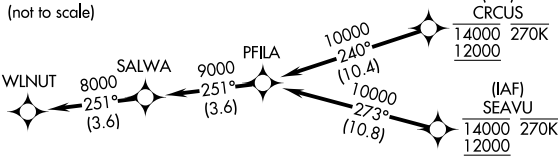


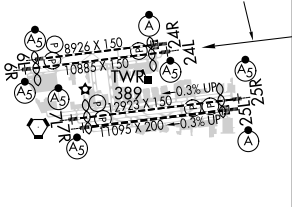
ELEV 128

D

TDZE 123

ROUTING TO WLNUT
(not to scale)





2000 JAKOS tr 251°

tr 263° RAFFS

See planview for multiple IF locations.

SUTIE 2200

IFJU 2500

GP 3.00° TCH 59

CATEGORY	A	B	C	D
RNP 0.15 DA		545/50	422 (500-1)	
RNP 0.30 DA		592/60	469 (500-1½)	

AUTHORIZATION REQUIRED