

APP CRS	Rwy Idg	11134
251°	TDZE	104
	Apt Elev	128

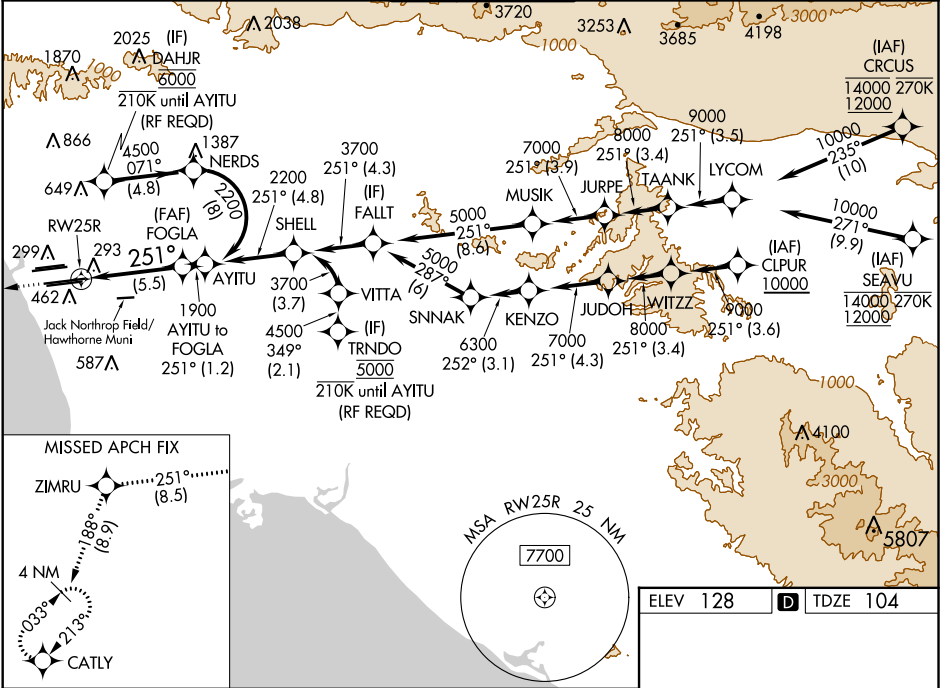
RNAV (RNP) Z RWY 25R  
LOS ANGELES INTL (LAX)

For uncompensated Baro-VNAV systems, procedure NA below 5°C (41°F) or above 54°C (130°F). Simultaneous approach authorized. Simultaneous approach authorized with HHR. GPS required. For inop ALS, increase RNP 0.11 all Cats visibility to RVR 6000.

MALSR

MISSED APPROACH: Climb to 2000 on track 251° to ZIMRU and track 188° to CATLY and hold.

D-ATIS	SOCAL APP CON		LOS ANGELES TOWER	GND CON		CLNC DEL	CPDLC
ARR 133.8	124.3	363.2	124.9 269.0	N 121.65	327.0	120.35	
DEP 135.65	(APCH FM WEST)	(090°-224°)	(090°-224°)	S 121.75	327.0	327.0	
	124.5	235.975	128.5 360.7	W 121.4	327.0		
	(225°-044°)	(045°-089°)					



2000

↑

tr 251°

ZIMRU

tr 188°

CATLY

See planview for multiple IF locations.

FOGLA

AYITU

2200

1900

251°

1900

GP 3.00°

TCH 54

5.5 NM

1.2 NM

CATEGORY	A	B	C	D
RNP 0.11 DA		453/40	349 (400-¾)	
RNP 0.30 DA		544/50	440 (500-1)	

**AUTHORIZATION REQUIRED**

ELEV 128

TDZE 104

TDZ/CL Rwy 6R, 7L, 24R, and 25L

HIRL all Rwy's

SW-3, 03 DEC 2020 to 31 DEC 2020

SW-3, 03 DEC 2020 to 31 DEC 2020