

APP CRS 071°	Rwy Idg 8566 TDZE 119 Apt Elev 128
------------------------	---------------------------------------------------------------

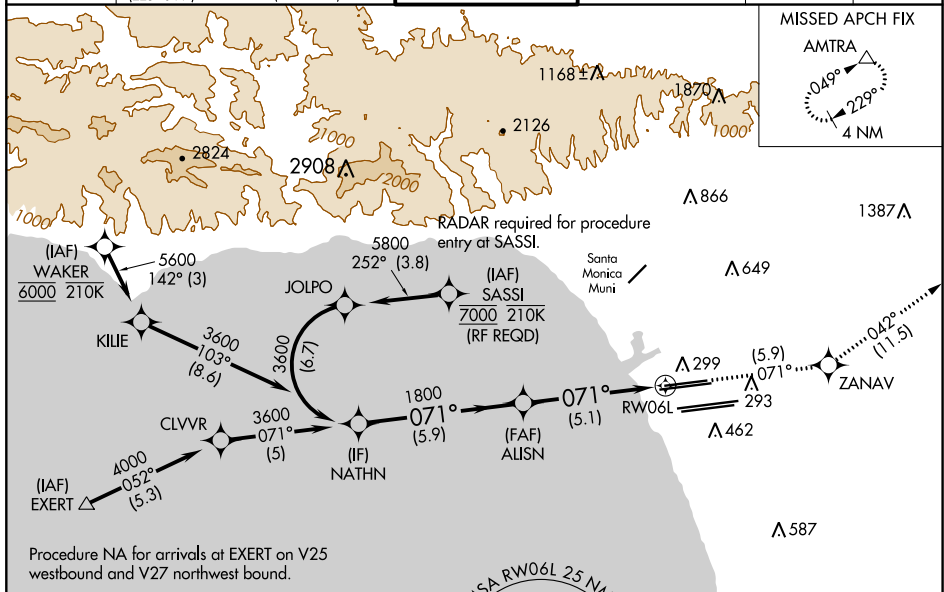
RNAV (RNP) Z RWY 6L
LOS ANGELES INTL (LAX)

T For uncompensated Baro-VNAV systems, procedure NA below 5°C (41°F) or above 54°C (130°F). Simultaneous approach authorized. GPS required. For inop MALS, increase RNP 0.30 all Cats visibility to RVR 6000.

MALSR

MISSED APPROACH: Climb to 3000 on track 071° to ZANAV and on track 042° to AMTRA and hold.

D-ATIS	SOCAL APP CON		LOS ANGELES TOWER	GND CON		CLNC DEL	CPDLC
ARR 133.8	124.3 363.2 (APCH FM WEST)	124.9 269.0 (090°-224°)	N 133.9 239.3	N 121.65 327.0		120.35	
DEP 135.65	124.5 235.975 (225°-044°)	128.5 360.7 (045°-089°)	S 120.95 379.1	S 121.75 327.0		327.0	
				W 121.4 327.0			



Procedure NA for arrivals at EXERT on V25 westbound and V27 northwest bound.

VGS1 and RNAV glidepath not coincident (VGS1 Angle 3.00°/TCH 77°).					3000 ↑ tr 071°	ZANAV 	tr 042° 	AMTRA
NATHN 3600 GP 3.00° TCH 55°					ALISN 1800 071° 1800			
5.9 NM					5.1 NM			
CATEGORY	A	B	C	D	RW06L			
RNP 0.30 DA	484/40 365 (400-¾)							
AUTHORIZATION REQUIRED								

