


APP CRS	Rwy Idg	11259
071°	TDZE	128
	Apt Elev	128

RNAV (RNP) Z RWY 7L

LOS ANGELES INTL (LAX)

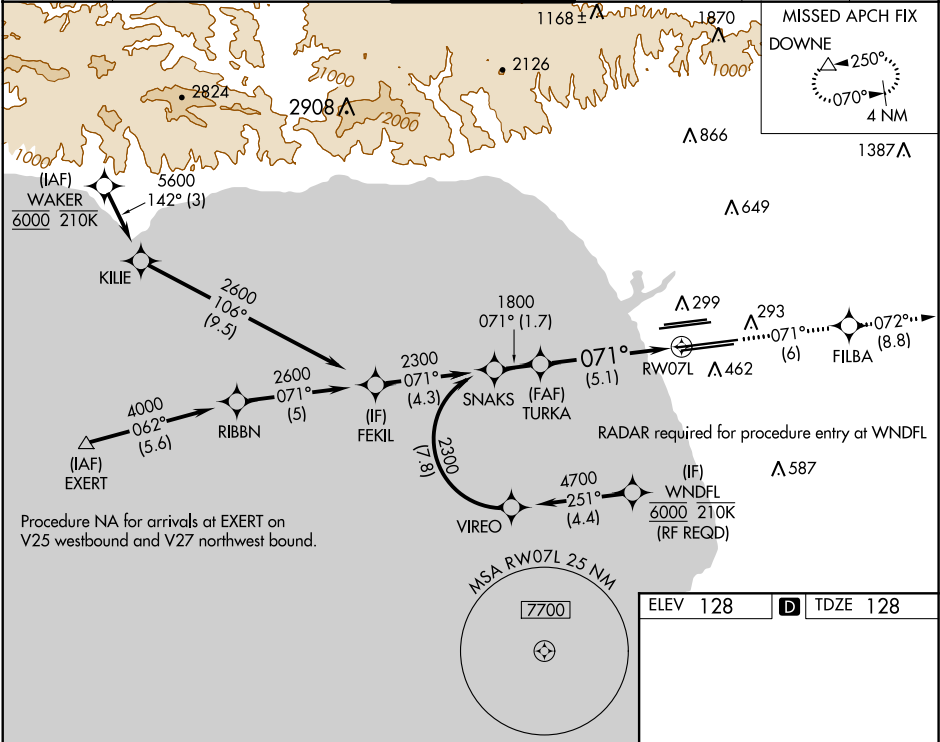
⚠ For uncompensated Baro-VNAV systems, procedure NA below 5°C (41°F) or above 54°C (130°F). GPS required. Simultaneous approach authorized. For inop ALS, increase RNP 0.11 all Cats visibility to RVR 5000 and RNP 0.30 all Cats visibility to RVR 6000.

MALSR



MISSED APPROACH: Climb to 3000 on track 071° to FILBA and on track 072° to DOWNE and hold.

D-ATIS	SOCAL APP CON	LOS ANGELES TOWER	GND CON	CLNC DEL	CPDLC
ARR 133.8	124.3 363.2	124.9 269.0	N 121.65 327.0	120.35	
DEP 135.65	(APCH FM WEST)	(090°-224°)	S 121.75 327.0	327.0	
	124.5 235.975	128.5 360.7	W 121.4 327.0		
	(225°-044°)	(045°-089°)			



VGSI and RNAV glidepaths not coincident (VGSI Angle 3.00/TCH 83).

3000

FILBA

tr 071°

DOWNE

2300

1800

071°

1800

RW07L

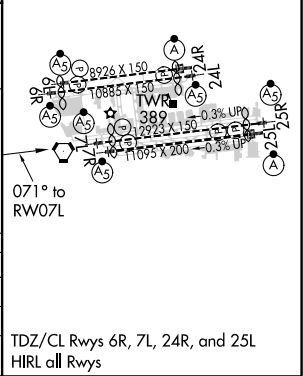
GP 3.00° TCH 59

1.7 NM

5.1 NM

CATEGORY	A	B	C	D
RNP 0.11 DA		441/24	313 (400-½)	
RNP 0.30 DA		485/40	357 (400-¾)	

AUTHORIZATION REQUIRED



SW-3, 03 DEC 2020 to 31 DEC 2020

SW-3, 03 DEC 2020 to 31 DEC 2020