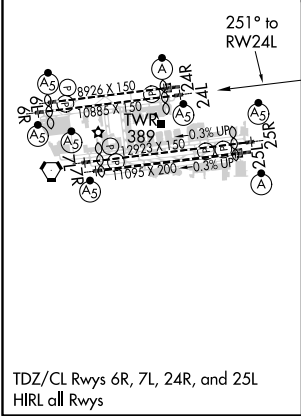
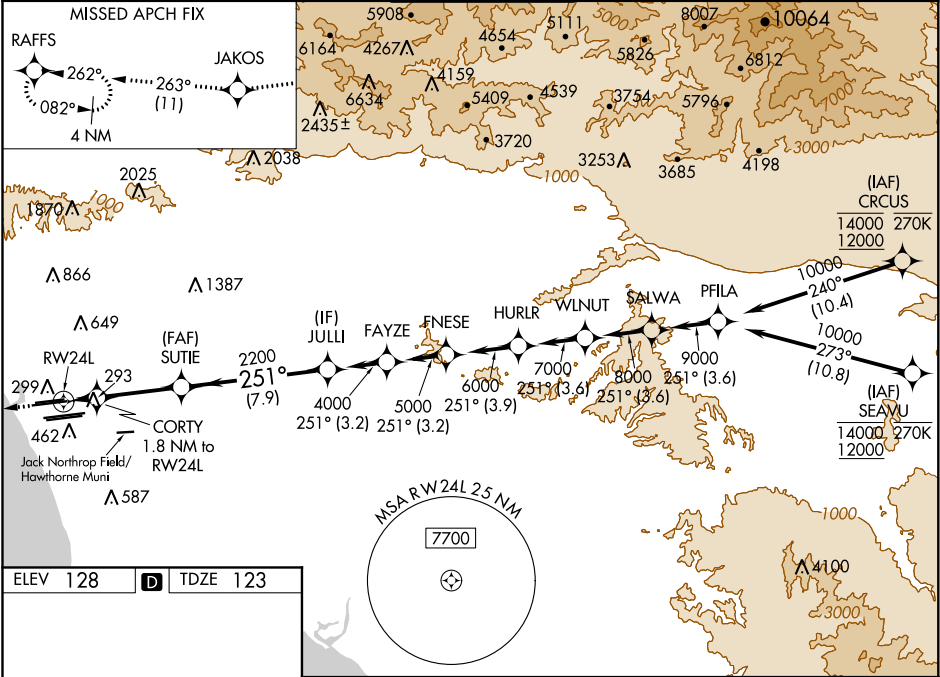


WAAS CH 56407 W24B	APP CRS 251°	Rwy Idg TDZE 123 Apt Elev 128
--	------------------------	---

RNAV (GPS) Y RWY 24L
LOS ANGELES INTL (LAX)

RNP APCH. ▼ For uncompensated Baro-VNAV systems, LNAV/VNAV NA below 5°C (41°F) or above 54°C (130°F). Simultaneous approach authorized. LNAV procedure NA during simultaneous operations. Use of FD or AP providing RNAV track guidance required during simultaneous operations. Simultaneous approach authorized with HHR. # RVR 1800 authorized with use of FD or AP or HUD to DA.	MALSR 	MISSED APPROACH: Climb to 2000 direct JAKOS and track 263° to RAFFS and hold.
---	-----------	--

D-ATIS ARR 133.8 DEP 135.65	SOCAL APP CON 124.3 363.2 (APCH FM WEST) 124.5 235.975 (225°-044°)	124.9 269.0 (090°-224°) 128.5 360.7 (043°-089°)	LOS ANGELES TOWER N 133.9 239.3 S 120.95 379.1	GND CON N 121.65 327.0 S 121.75 327.0 W 121.4 327.0	CLNC DEL 120.35 327.0	CPDLC
---	--	--	--	---	---	-------



2000	JAKOS	tr 263°	RAFFS	VGSI and RNAV glidepath not coincident (VGSI Angle 3.00/TCH 79).
*LNAV only				
CORTY 1.8 NM to RWY 24L				
RWY 24L				
2200				
251°				
4000				
GP 3.00°				
TCH 59				
1.8 NM				
4.6 NM				
7.9 NM				
CATEGORY	A	B	C	D
LPV DA#	323/24 200 (200-½)			
LNAV/VNAV DA	608/60 485 (500-1¼)			
LNAV MDA	660/24 537 (600-½)		660/55 537 (600-1)	

SW-3, 03 DEC 2020 to 31 DEC 2020

SW-3, 03 DEC 2020 to 31 DEC 2020