

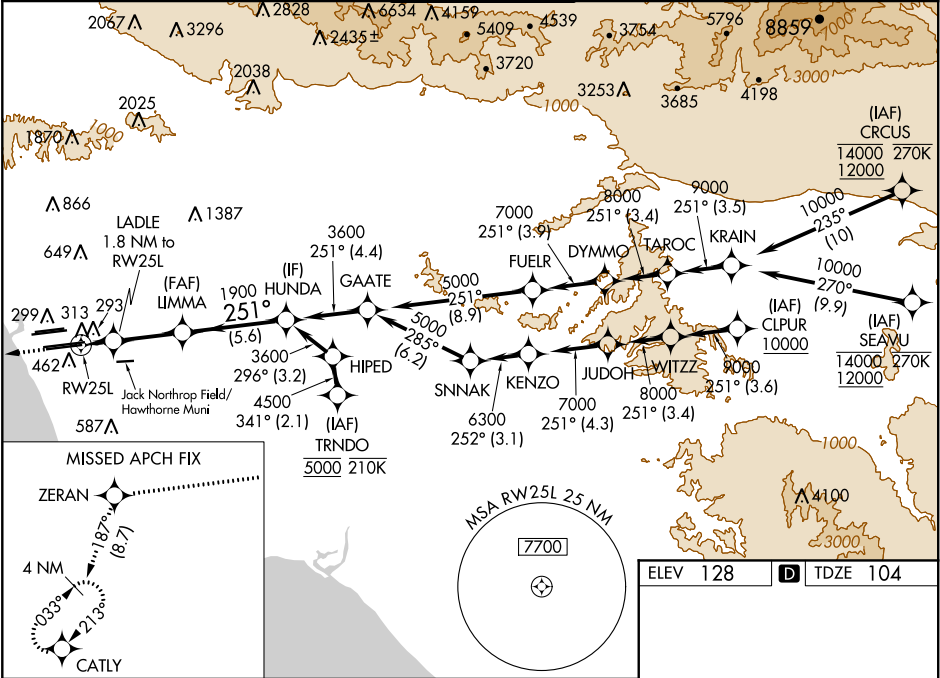
WAAS CH 53507 W25A	APP CRS 251°	Rwy Idg 11095 TDZE 104 Apt Elev 128	RNAV (GPS) Y RWY 25L LOS ANGELES INTL (LAX)
--	------------------------	--	---

▼ For uncompensated Baro-VNAV systems, LNAV/VNAV NA below 5°C (41 °F) or above 54°C (130°F). DME/DME RNP-0.3 NA. For inop ALS, increase LPV all Cats visibility to RVR 4500. Simultaneous approach authorized. Simultaneous approach authorized with HHR 25. LNAV only approach NA during simultaneous operations. Use of FD or AP providing RNAV track guidance required during simultaneous operations.

ALSF-2

MISSED APPROACH: Climb to 2000 direct ZERAN and on track 187° to CATLY and hold.

D-ATIS ARR 133.8 DEP 135.65	SOCAL APP CON 124.3 363.2 (APCH FM WEST) 124.5 235.975 (225°-044°)	124.9 269.0 (090°-224°) 128.5 360.7 (045°-089°)	LOS ANGELES TOWER N 133.9 239.3 S 120.95 379.1	GND CON N 121.65 327.0 S 121.75 327.0 W 121.4 327.0	CLNC DEL 120.35 327.0	CPDLC
---	--	--	--	---	---	-------



2000

ZERAN

↑

tr

187°

CATLY

↗

VGSI and RNAV glidepath not coincident (VGSI Angle 3.00/TCH 70).

HUNDA

LIMMA

1900

3600

251°

700*

GP 3.00°

TCH 54

1.8

3.7 NM

5.6 NM

*LNAV only

LADLE 1.8 NM to RW25L

RW25L

CATEGORY	A	B	C	D
LPV DA		365/20	261 (300-½)	
LNAV/VNAV DA		575/60	471 (500-1¼)	
LNAV MDA	640/24	536 (600-½)	640/55	536 (600-1)

TDZ/CL Rwy's 6R, 7L, 24R, and 25L

HIRL all Rwy's

SW-3, 03 DEC 2020 to 31 DEC 2020

SW-3, 03 DEC 2020 to 31 DEC 2020