

HI-TACAN RWY 25

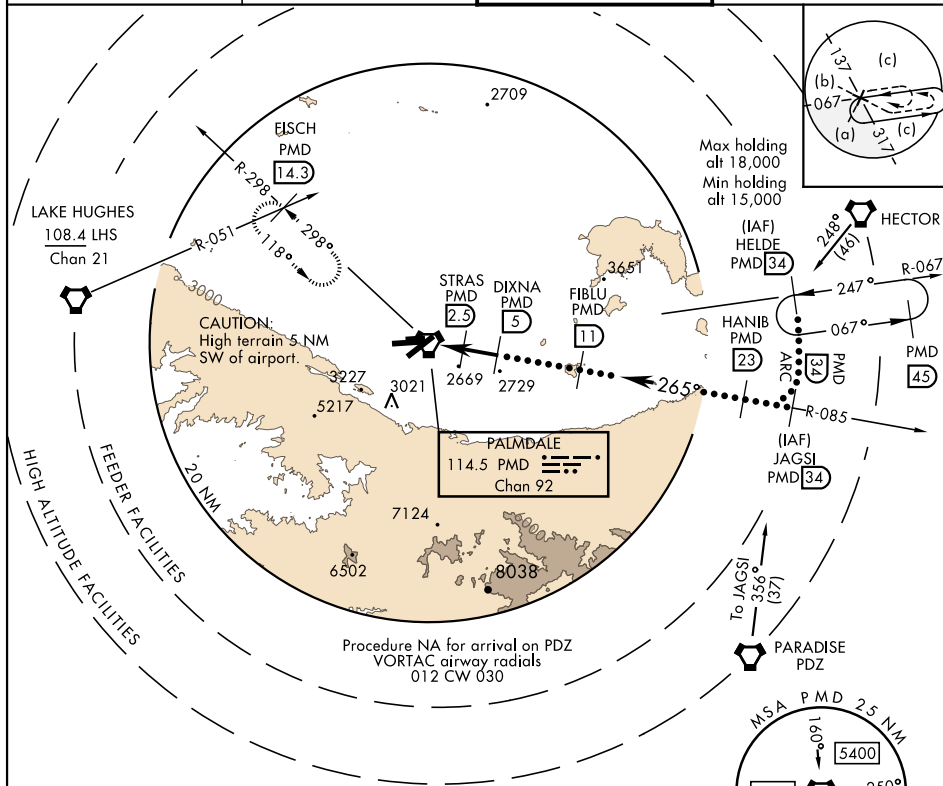
TACAN PMD Chan 92	APCH CRS 265°	Rwy Idg 12,002 TDZE 2503 Arpt Elev 2543
-----------------------------	-------------------------	--

JAL-310 [USAF]

PALMDALE USAF PLANT 42 (KPMD)

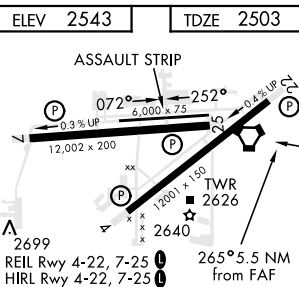
<p>▼ * Circling NA S of Rwy 4 and 25.</p> <p>▲</p>	<p>MISSED APPROACH: Climb to 3000 then climbing right turn to 6700 on heading 318° on PMD VORTAC R-298 to FISHC INT/PMD 14.3 DME/RADAR and hold, continue climb-in-hold to 6700.</p>
--	--

ATIS 118.275	JOSHUA APP CON 124.55 363.0	PALMDALE TOWER ★ 123.7 (CTAF) 0 317.6	GND CON 121.9 348.6
------------------------	---------------------------------------	---	-------------------------------



EMERG SAFE ALT 100 NM 14,400

3000	6700	VGSI and descent angles not coincident.			JAGSI R-085	FL180
↑	hdg 318°				FL180	15,000
VORTAC	STRAS	DIXNA	HANIB	FIBLU	FL180	15,000
	2.3	5	23	11	12,000	15,000
	3500	4500	6000	12,000	15,000	15,000
	0.8 NM	2.2 NM	2.5 NM			
CATEGORY	C	D	E			
S-25	2840-1	337	(400-1)			
CIRCLING *	3140-1½ 597 (600-1½)	3740-3 1197 (1200-3)	3760-3 1217 (1300-3)			



HI-TACAN RWY 25