

VORTAC PMD	APP CRS	Rwy Idg	12002
114.5	265°	TDZE	2503
Chan 92		Apt Elev	2543

VOR or TACAN RWY 25

PALMDALE USAF PLANT 42 (PMD)

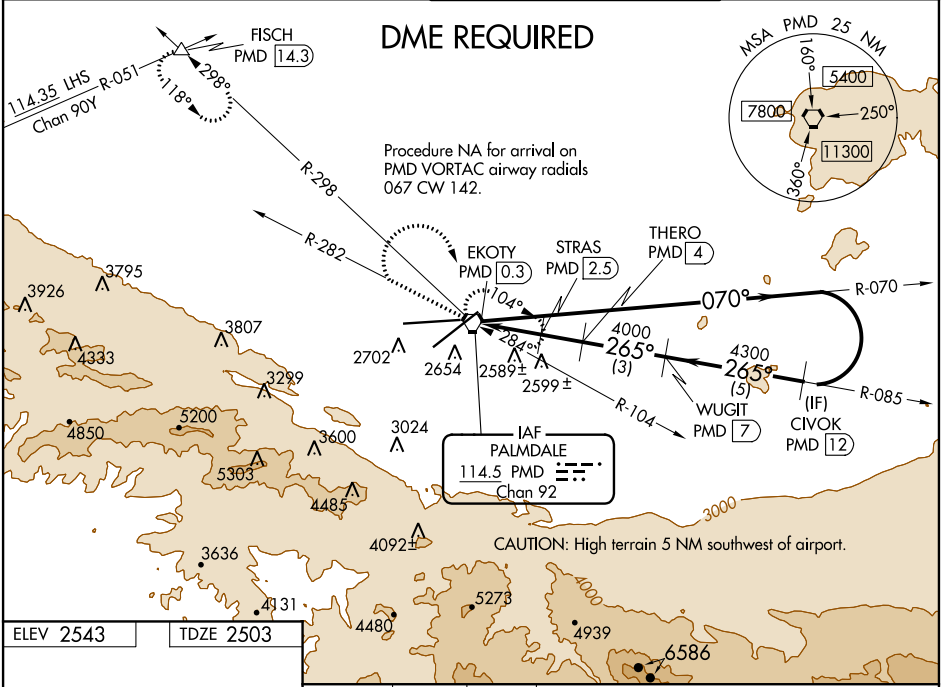
▼

▲

Circling NA for Cats C, D, and E south of Rwy 4 and 25.
DME required.

MISSED APPROACH: Climb to 5000 on PMD VORTAC R-282 then climbing right turn to 7000 direct PMD VORTAC and hold (TACAN aircraft climbing right turn to 6700 on PMD VORTAC R-298 to FISCH INT/ 14.3 DME and hold SE left turn 298° inbound, continue climb-in-hold to 6700).

ATIS 118.275	JOSHUA APP CON 124.55 363.0	PALMDALE TOWER ★ 123.7 (CTAF) 0 317.6	GND CON 121.9 317.6
-----------------	--------------------------------	--	------------------------



ELEV 2543 TDZE 2503

ASSAULT STRIP
6000 X 75

12002 X 200

0.5% DOWN

0.72% UP

0.3% UP

0.6% DOWN

2626

2640

265° 4.5 NM from FAF

REIL Rwy 4, 7, 22 and 25
HIRL Rwy 4-22 and 7-25

5000 7000 PMD

PMD R-282

VGSI and descent angles not coincident (VGSI Angle 3.00/TCH 76).

5200

070°

WUGIT PMD 7 CIVOK PMD 12

5200

265°

5200

0.5 0.3 2.2 NM 1.5 NM 3 NM 5 NM

CATEGORY	A	B	C	D	E
S-25	2840-1 337 (300-1)				
CIRCLING	3020-1 477 (500-1)	3060-1 517 (600-1)	3140-1½ 597 (600-1½)	3740-3 1197 (1200-3)	3760-3 1217 (1300-3)