

## ILS or LOC X RWY 32

LOC I-RIV <b>110.1</b>	APCH CRS <b>315°</b>	Rwy ldg <b>13,302</b> TDZE <b>1497</b> Arprt Elev <b>1536</b>
---------------------------	-------------------------	---

AL-348 [USAF]

MARCH ARB (KRIV)

▼ \*When ALS inop, increase CAT ABCDE RVR to 40 and vis to  $\frac{3}{4}$  mile.  
 \*\*When ALS inop, increase CAT AB RVR to 55 and vis to 1 mile  
 and CAT CDE RVR to 60 and vis to 1  $\frac{1}{2}$  miles.

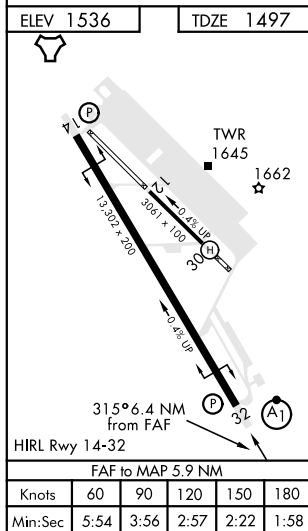
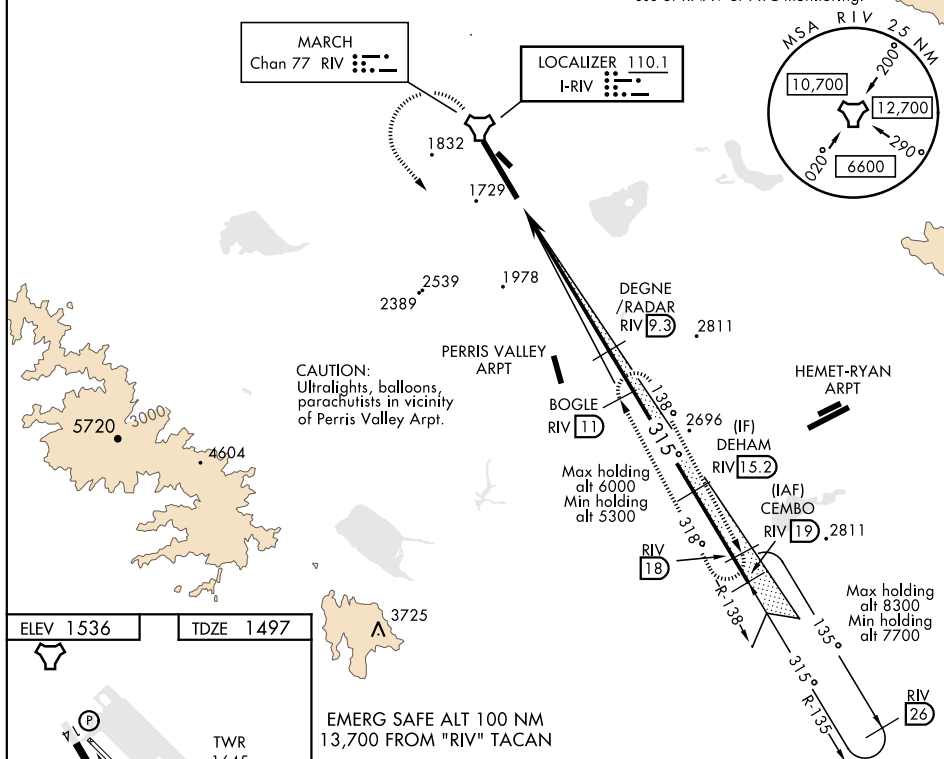


† MISSED APPROACH: Climb to 5300 direct RIV TACAN, then turn left to intercept RIV R-138 direct BOGLE, continue climb in hold to 5300.

ATIS <b>134.75 239.05</b>	SOCAL APP CON <b>134.0 278.3</b>	MARCH TOWER <b>127.65 253.5</b>	GND CON <b>121.75 335.8</b>	CLNC DEL <b>121.75 335.8</b>
------------------------------	-------------------------------------	------------------------------------	--------------------------------	---------------------------------

\*\*\* Circling not authorized NE of Rwy 14-32. Rapid rising terrain.

† Missed approach requires use of RNAV or ATC monitoring.



EMERG SAFE ALT 100 NM  
13,700 FROM "RIV" TACAN

5300 RIV	RIV R-138	BOGLE RIV 11	DEGNE /RADAR 9.3	DEHAM 15.2	CEMBO R-135 19
TACAN	KIMDE 3.3	3.9	3600	3600	7200
1.5 NM	6 NM				
315° 6.4 NM from FAF					
FAF to MAP 5.9 NM					
Knots	60	90	120	150	180
Min:Sec	5:54	3:56	2:57	2:22	1:58
CIRCLING***	2180-1 644 (700-1)	2260-1 724 (800-1)	2300-2½ 764 (800-2½)	2440-3 904 (1000-3)	2840-3 1304 (1400-3)

RIVERSIDE, CALIFORNIA

33°53'N-117°16'W

MARCH ARB (KRIV)

Amdt 10 08NOV18

## ILS or LOC X RWY 32