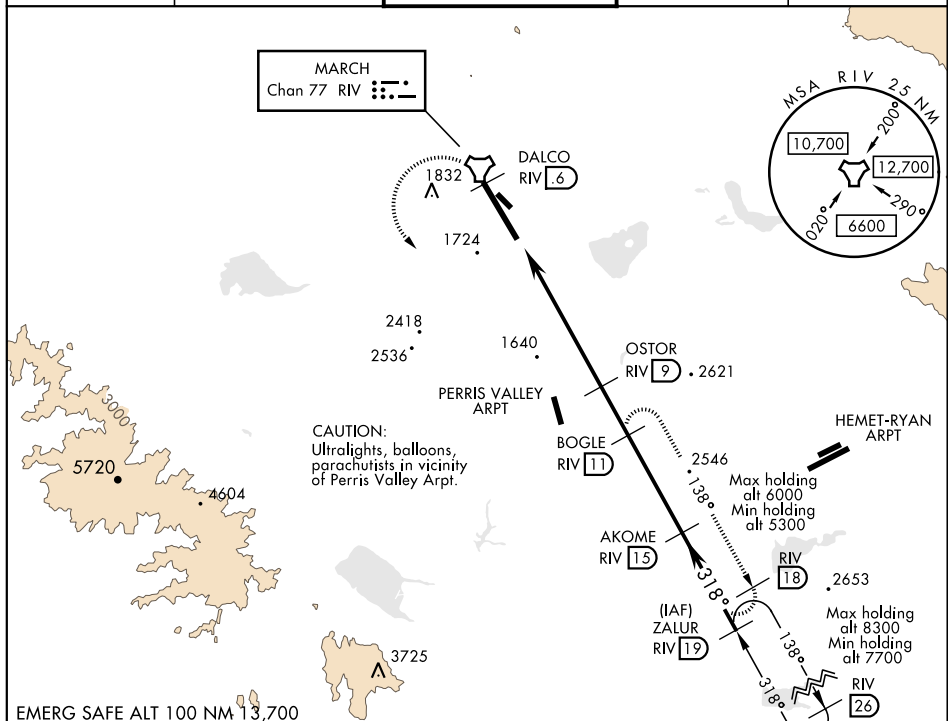


TACAN Y RWY 32

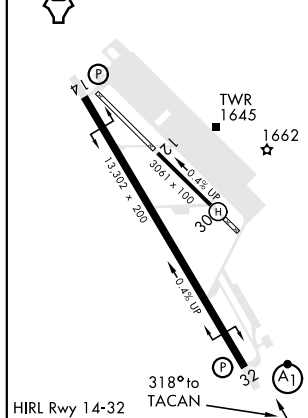
TACAN RIV Chan 77	APCH CRS 318°	Rwy ldg 13,302 TDZE 1497 Arpt Elev 1536	AL-348 [USAF]	MARCH ARB (KRIV)
▼ *When ALS inop, increase CAT AB RVR to 55 and vis to 1 mile, CAT CDE vis to 1½ miles. ** Circling not authorized NE of Rwy 14-32. Rapid rising terrain.			ALSF-1 	MISSED APPROACH: Climb to 5300 on RIV TACAN R-138 to DALCO, then turn left to intercept RIV R-138 direct BOGLE, continue climb in hold to 5300.

ATIS 134.75 239.05	SOCAL APP CON 134.0 278.3	MARCH TOWER 127.65 253.5	GND CON 121.75 335.8	CLNC DEL 121.75 335.8
------------------------------	-------------------------------------	------------------------------------	--------------------------------	---------------------------------



EMERG SAFE ALT 100 NM 13,700

ELEV 1536 TDZE 1497



	5300	DALCO RIV R-138	BOGLE RIV R-138	ZALUR 19	7300
	TACAN	CULAX 3.3	OSTOR 9	AKOME 15	5400
					3600
					5.7 NM
					3.13° TCH 59
CATEGORY	A	B	C	D	E
S-32*	2040/24	543 (600-½)	2040/60	543 (600-1½)	
C CIRCLING**	2180-1 644 (700-1)	2260-1 724 (800-1)	2300-2½ 764 (800-2½)	2440-3 904 (1000-3)	2840-3 1304 (1400-3)

TACAN Y RWY 32