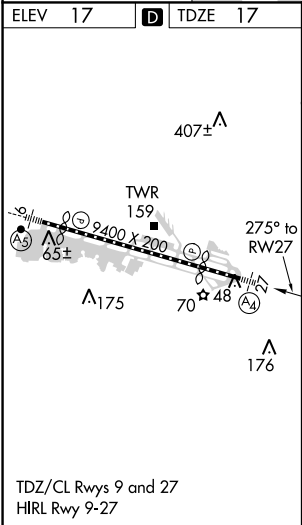
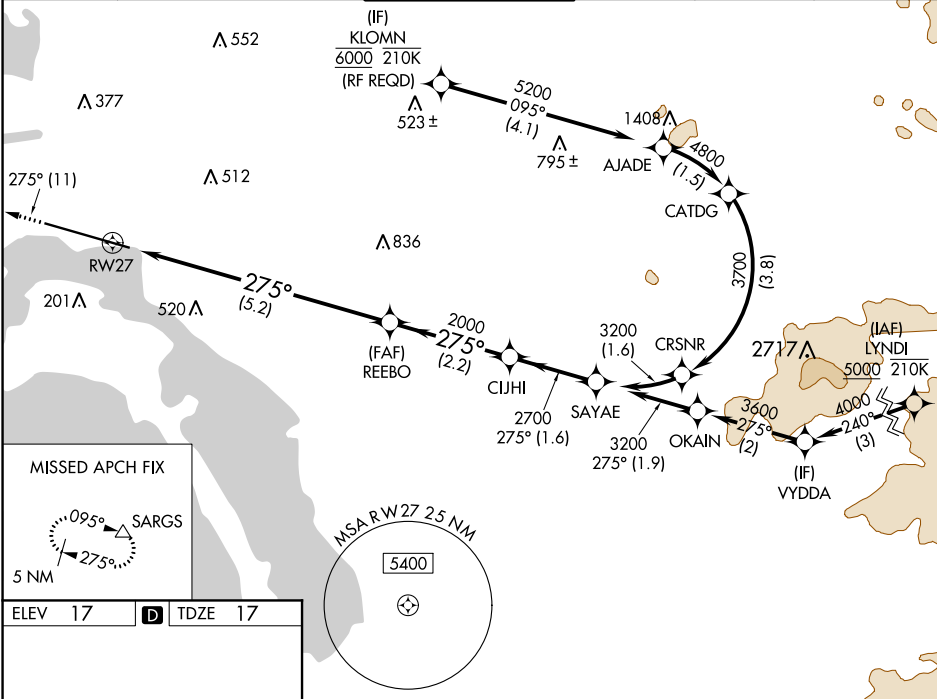


APP CRS	Rwy Idg	7590
275°	TDZE	17
	Apt Elev	17

RNAV (RNP) Z RWY 27
SAN DIEGO INTL (SAN)

RNP AR APCH.	MALS	MISSED APPROACH: Climb to 2500 on track 275° to SARGS and hold.
▼ For uncompensated Baro-VNAV systems, procedure NA below 6°C or above 46°C. Straight-in Rwy 27 at night, operational VGSI required, remain on or above VGSI glidepath until threshold. For inop ALS, increase RNP 0.30 all Cnts visibility to 2½ SM.	Ⓐ	

D-ATIS 134.8	SOCAL APP CON 119.6 363.1 (WEST) 124.35 279.625 (EAST)	LINDBERGH TOWER 118.3 338.225	GND CON 123.9	CLNC DEL 125.9	CPDLC
-----------------	--	----------------------------------	------------------	-------------------	-------



ELEV 17	TDZE 17	See planview for multiple IF locations.	
2500 SARGS		SAYAE 3200	
tr 275°		GP 3.50° TCH 65	
RW27		2700	
2000		2000	
5.2 NM		2.2 NM	
A		B	
RNP 0.11 DA		617-1½ 600 (600-1½)	
RNP 0.30 DA		778-2 761 (800-2)	
AUTHORIZATION REQUIRED			

SW-3, 03 DEC 2020 to 31 DEC 2020

SW-3, 03 DEC 2020 to 31 DEC 2020