

LOC/DME I-UBR <b>110.9</b> Chan <b>46</b>	APCH CRS <b>275°</b>	Rwy Idg <b>N/A</b> THRE <b>N/A</b> Arpt Elev <b>26</b>
---	-------------------------	--

AL-374 [USN]

NORTH ISLAND NAS (HALSEY FIELD) (KNZY)

**CAUTION:** Maneuvering for circling approach not authorized W of Rwy18-36 centerline. Approach authorized for Rwy 18 or left downwind approach to Rwy 29 after flying down Rwy 18.

† MISSED APPROACH: Climb and maintain 2000 via hdg 177°, intercept PGY VORTAC R-250 to HANIS and hold.

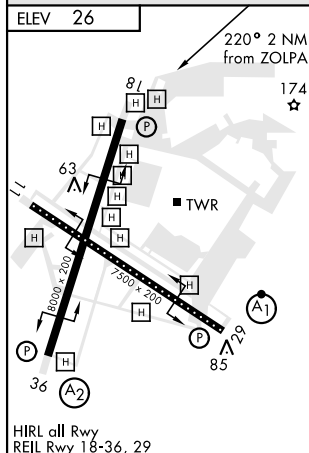
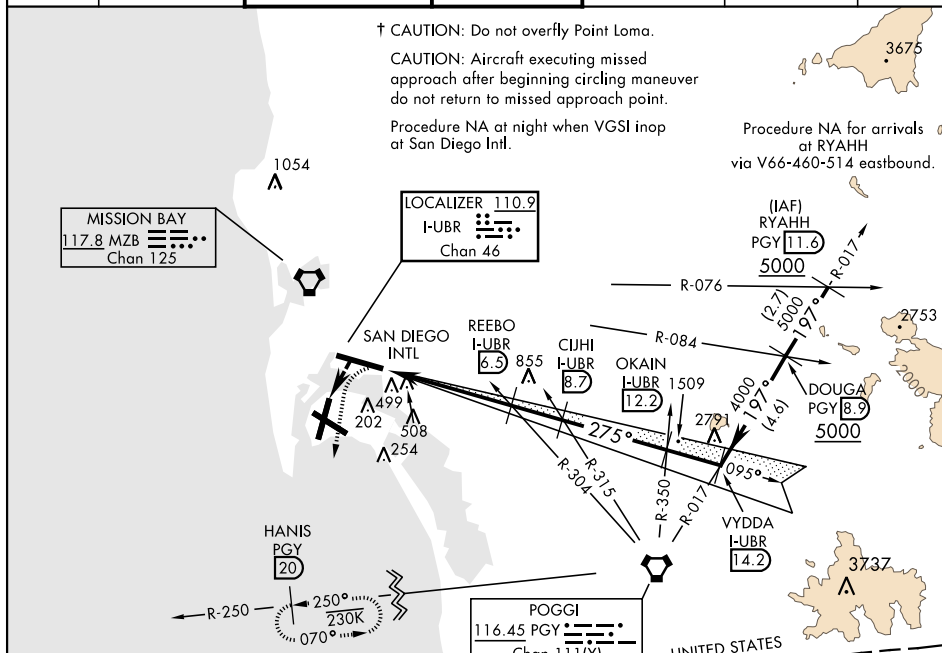
ATIS ★ 317.8	SOCAL APP CON 125.15 317.55	NORTH ISLAND TOWER★ 135.1 336.4	LINDBERGH TOWER 118.3 338.225	GND CON 118.0 360.675	CLNC DEL 128.4 288.25	PAR/ASR
-----------------	--------------------------------	------------------------------------	----------------------------------	--------------------------	--------------------------	---------

† CAUTION: Do not overfly Point Loma.

**CAUTION:** Aircraft executing missed approach after beginning circling maneuver do not return to missed approach point.

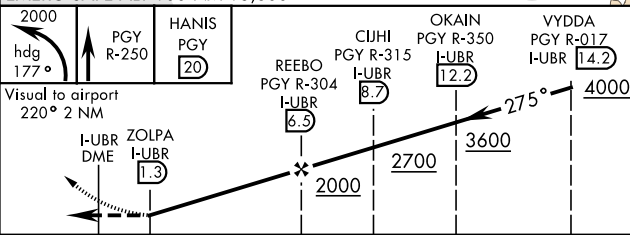
Procedure NA at night when VGSI inop at San Diego Intl.

Procedure NA for arrivals  
at RYAHH  
via V66-460-514 eastbound.



HIRL all Rwy  
REIL Rwy 18-36. 29

EMERG SAFE ALT 100 NM 13,600



FAF to MAP 5.2 NM						CATEGORY	A	B	C	D
Knots	60	90	120	150	180	C CIRCLING *	860-2½	834 (900-2½)	880-2½ 854 (900-2½)	880-2¾ 854 (900-2¾)
Min:Sec	5:12	3:28	2:36	2:05	1:44					

SAN DIEGO, CALIFORNIA

32°42'N-117°13'W

NORTH ISLAND NAS (HALSEY FIELD) (KNZY)

Amdt 6 05NOV20

LOC/DME-A