

PIGGN TWO DEPARTURE (RNAV)

JOHN WAYNE AIRPORT-ORANGE COUNTY (SNA)
AL-377 (FAA)
SANTA ANA, CALIFORNIA

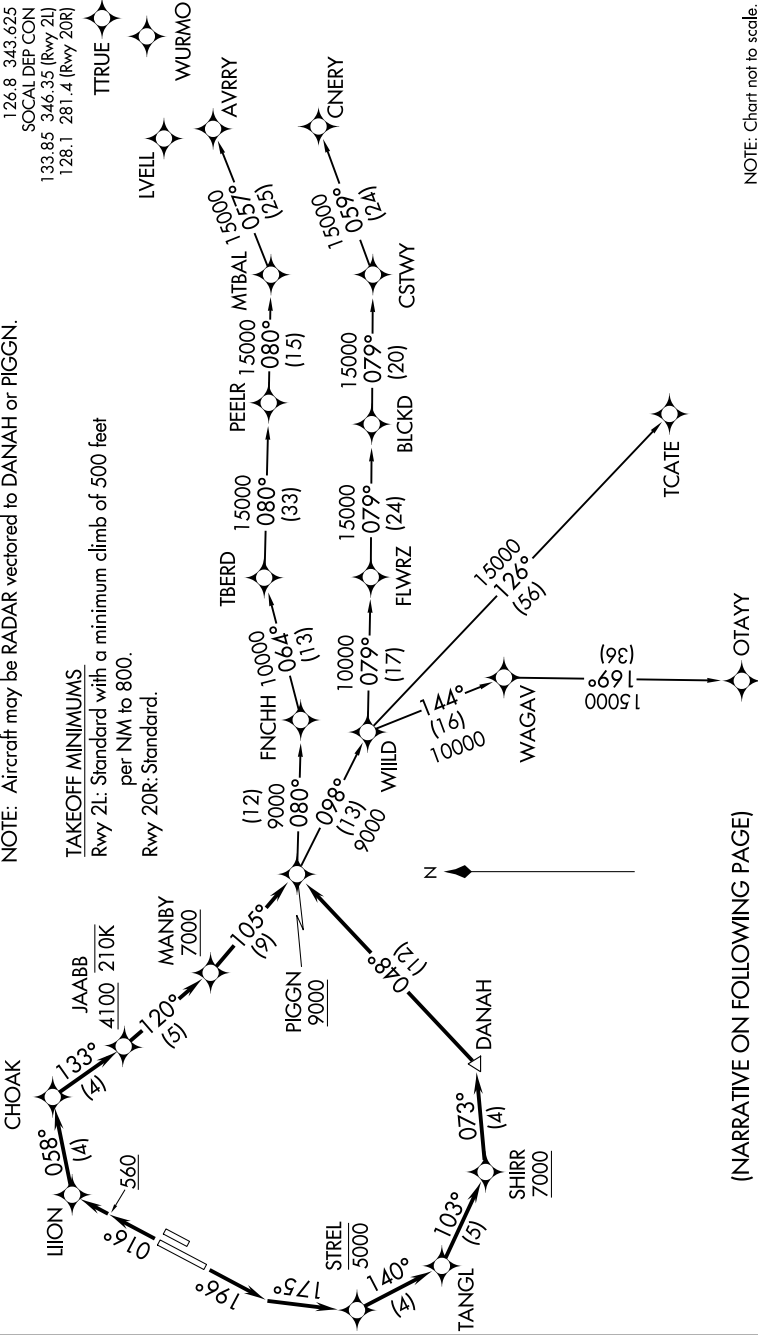
SW-3, 03 DEC 2020 to 31 DEC 2020

D-ATIS
126.0
CINC DEL
118.0
CPDLC
GND CON
120.8 (EAST)
132.25 (WEST)
JOHN WAYNE TOWER*
126.8 343.625
SOCAL DEP CON
133.85 346.35 (Rwy 2L)
128.1 281.4 (Rwy 20R)

NOTE: RADAR required.
NOTE: RNAV-1.
NOTE: DME/DME/IRU or GPS required.
NOTE: Turboprop and turboprop only.
NOTE: Parachute jumping all hours, 14000' and below,
north of route between PIGGN and FNCHH.
NOTE: Aircraft may be RADAR vectored to DANAH or PIGGN.

TAKEOFF MINIMUMS
Rwy 2L: Standard with a minimum climb of 500 feet
per NM to 800.
Rwy 20R: Standard.

TOP ALTITUDE:
13000



(NARRATIVE ON FOLLOWING PAGE)

NOTE: Chart not to scale.

PIGGN TWO DEPARTURE (RNAV)

JOHN WAYNE AIRPORT-ORANGE COUNTY (SNA)
SANTA ANA, CALIFORNIA

SW-3, 03 DEC 2020 to 31 DEC 2020