

APP CRS	Rwy Idg	5701
196°	TDZE	55
	Apt Elev	56

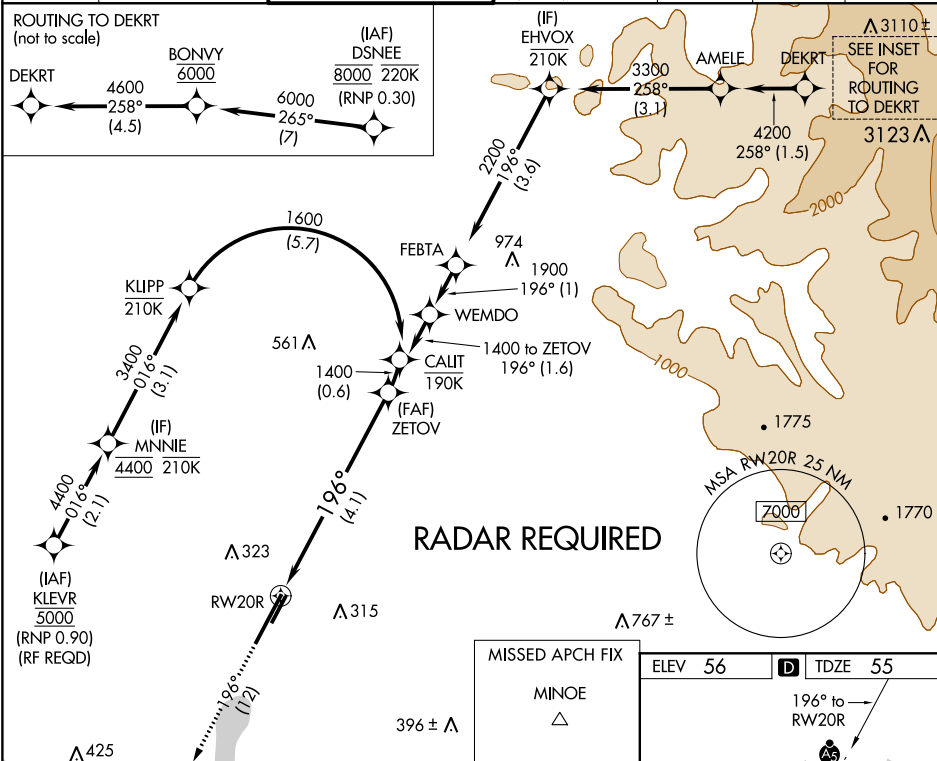
RNAV (RNP) Z RWY 20R  
JOHN WAYNE AIRPORT-ORANGE COUNTY (SNA)

**▼** For uncompensated Baro-VNAV systems, procedure NA below 5°C (41°F) or above 54°C (130°F). GPS required.

**MALSR**

**MISSED APPROACH:** Climb to 3000 on track 196° to MINOE.

D-ATIS <b>126.0</b>	SOCAL APP CON <b>121.3 263.1</b>	JOHN WAYNE TOWER ★ <b>126.8 (CTAF) 0 343.625</b>	GND CON (EAST) <b>120.8</b> (WEST) <b>132.25</b>	CLNC DEL <b>118.0</b>	CPDLC	UNICOM <b>122.95</b>
------------------------	-------------------------------------	---	---	--------------------------	-------	-------------------------



3000

MINOE

VGSI and RNAV glidepath not coincident  
(VGSI Angle 3.00/TCH 63).

See planview for multiple IF locations.

ZETOV

↑

tr 196°

△

1400

RW20R

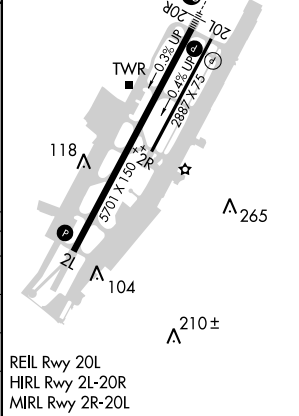
196°

4.1 NM

1400

GP 3.00°  
TCH 51

CATEGORY	A	B	C	D
RNP 0.11 DA	377/30		322 (400- $\frac{5}{8}$ )	
RNP 0.15 DA	563-1 $\frac{1}{4}$		508 (600-1 $\frac{1}{4}$ )	
RNP 0.30 DA	619-1 $\frac{1}{2}$		564 (600-1 $\frac{1}{2}$ )	



AUTHORIZATION REQUIRED

SW-3, 03 DEC 2020 to 31 DEC 2020

SW-3, 03 DEC 2020 to 31 DEC 2020