
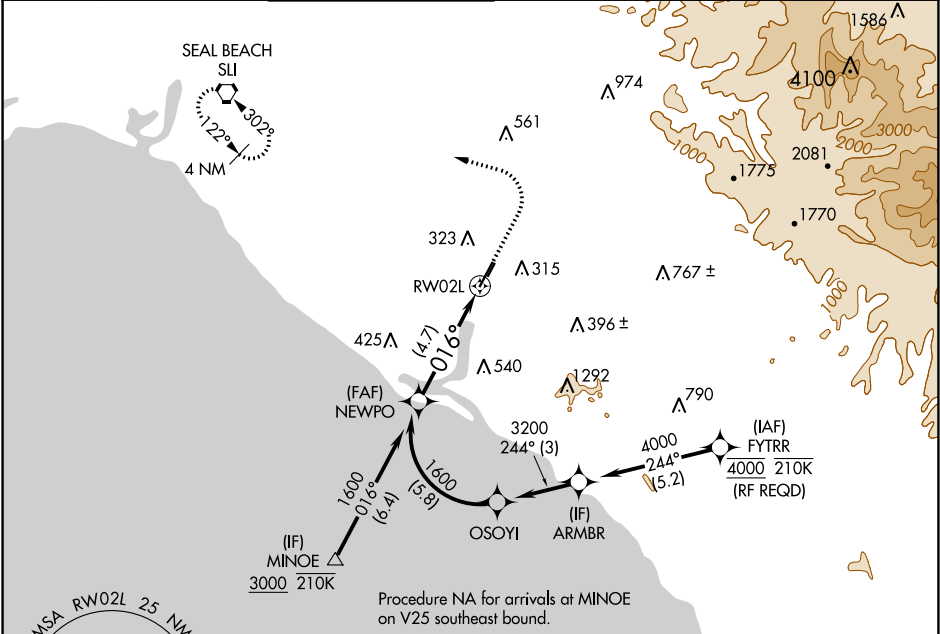


APP CRS <b>016°</b>	Rwy Idg	<b>5701</b>
	TDZE	<b>56</b>
	Apt Elev	<b>56</b>
RNAV (RNP) Z RWY 2L		
JOHN WAYNE AIRPORT-ORANGE COUNTY (SNA)		

	For uncompensated Baro-VNAV systems, procedure NA below 5°C (41°F) or above 54°C (130°F). GPS required.	MISSED APPROACH: Climb to 800 then climbing left turn to 2600 direct SLI VORTAC and hold.

D-ATIS <b>126.0</b>	SOCAL APP CON <b>121.3 263.1</b>	JOHN WAYNE TOWER ★ <b>126.8 (CTAF) 0 343.625</b>	GND CON (EAST) <b>120.8</b> (WEST) <b>132.25</b>	CLNC DEL <b>118.0</b>	CPDLC	UNICOM <b>122.95</b>
------------------------	-------------------------------------	---	---	--------------------------	-------	-------------------------



ELEV 56		D TDZE 56	
VGSI and RNAV glidepath not coincident (VGSI Angle 3.00/TCH 72).			
NEWPO 1600			
GP 3.00° TCH 55			
See planview for multiple IF locations.			
4.7 NM			
RWY 2L			
CATEGORY	A	B	C
RNP 0.30 DA	403-1 1/8 347 (400-1 1/8)		
AUTHORIZATION REQUIRED			