
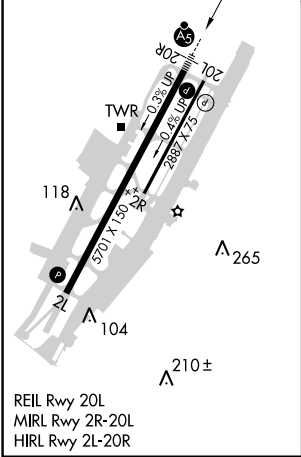
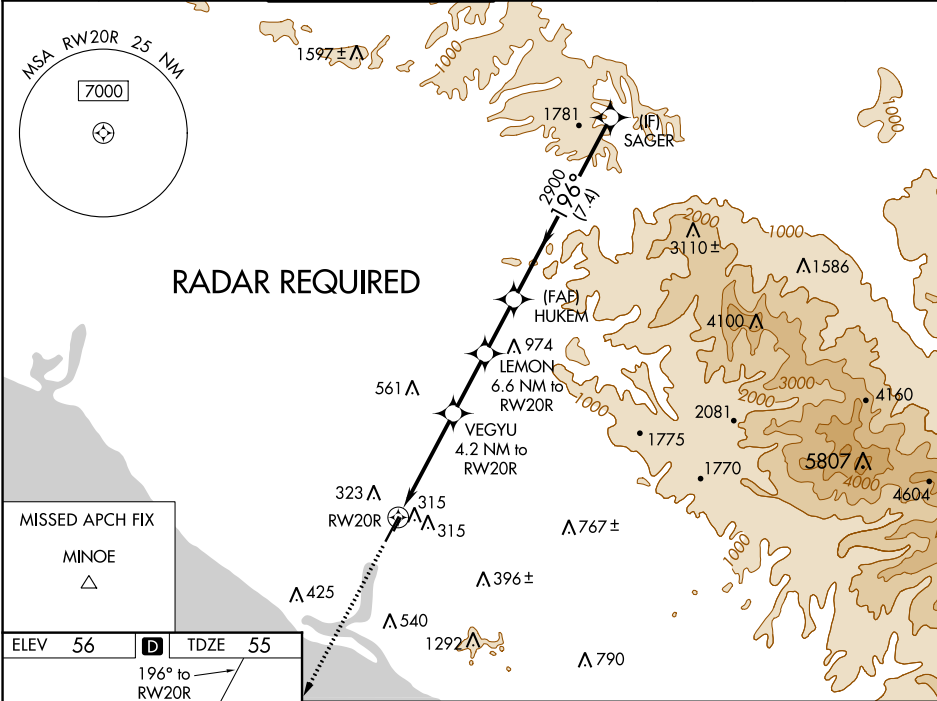


WAAS CH 99502 W20A	APP CRS 196°	Rwy Idg 5701 TDZE 55 Apt Elev 56
--	------------------------	---

RNAV (GPS) Y RWY 20R
JOHN WAYNE AIRPORT-ORANGE COUNTY (SNA)

⚠	For uncompensated Baro-VNAV systems, LNAV/VNAV NA below 5°C (41°F) or above 54°C (130°F). DME/DME RNP-0.3 NA. #RVR 1800 authorized with use of FD or AP or HUD to DA.	MALSR 	MISSED APPROACH: Climb to 3000 direct MINOE.			
D-ATIS 126.0	SOCAL APP CON 121.3 263.1	JOHN WAYNE TOWER ★ 126.8 (CTAF) 0 343.625	GND CON (EAST) 120.8 (WEST) 132.25	CLNC DEL 118.0	CPDLC	UNICOM 122.95



3000 ↑	MINOE △	VGSi and RNAV glidepath not coincident (VGSi Angle 3.00/TCH 63).				HUKEM	SAGER
LNAV only.		VEGYU 4.2 NM to RW20R	LEMON 6.6 NM to RW20R	2900	2200	196°	3500
RW20R		1420*		2900		GP 3.00° TCH 51	
1.5 NM		2.7 NM	2.4 NM	2.2 NM	7.4 NM		
CATEGORY		A	B	C	D		
LPV DA#		255/24		200 (200-½)			
LNAV/ VNAV DA		516/60		461 (500-1¼)			
LNAV MDA		580/24 525 (600-½)		580/55 525 (600-1)			
C CIRCLING		640-1 584 (600-1)		840-2¼ 784 (800-2¼)		1160-3 1104 (1200-3)	

SW-3, 03 DEC 2020 to 31 DEC 2020

SW-3, 03 DEC 2020 to 31 DEC 2020