

WAAS CH <b>78306</b> <b>W07A</b>	APP CRS <b>074°</b>	Rwy Idg TDZE Apt Elev	<b>6052</b> <b>13</b> <b>14</b>
--	------------------------	-----------------------------	---------------------------------------


RNAV (GPS) RWY 7

SANTA BARBARA MUNI (SBA)

▼ DME/DME RNP -0.3 NA. Inoperative table does not apply to LNAV/VNAV.

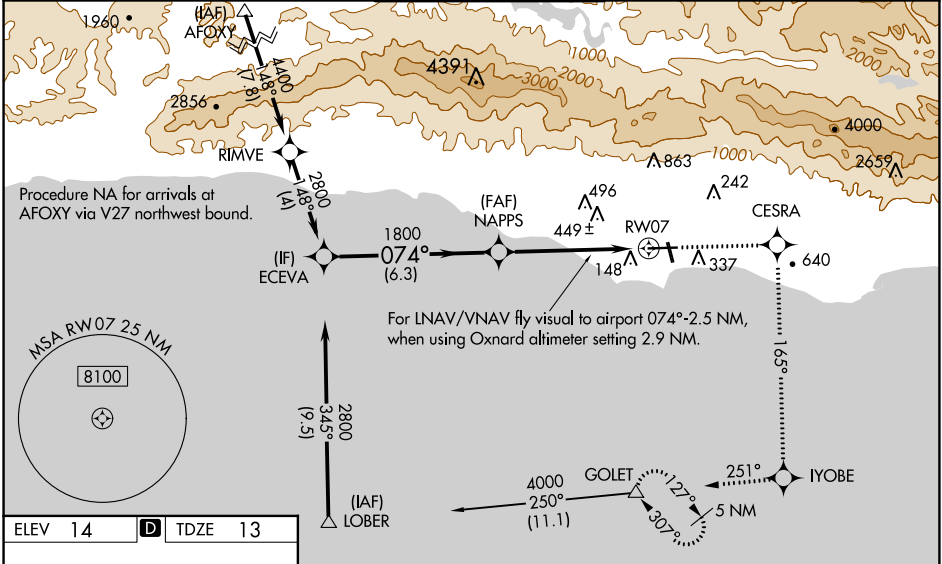
⚠ For inoperative MALSR when using Oxnard altimeter setting, increase LPV all Cts visibility to 1½, and LNAV Cat C to 1¾, Cat D to 2. For inoperative MALSR, increase LPV all Cts visibility to RVR 6000. For uncompensated Baro-VNAV systems, LNAV/VNAV NA below -15°C (5°F) or above 49°C (120°F). Baro-VNAV NA when using Oxnard altimeter setting. When local altimeter setting not received, use Oxnard altimeter setting and increase all DAs/MDAs 100 feet, and increase, LNAV/VNAV visibility Cat C and D ¼ mile, LNAV Cat C to RVR 6000, Cat D ¼ mile, Circling Cat A visibility ¼ mile, Cat C visibility ½ mile. VDP NA when using Oxnard altimeter setting. Night landing Rwy 15R NA.

MALSR

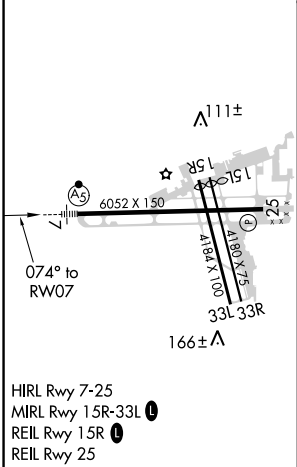


MISSED APPROACH: Climb to 4000 direct CESRA and right turn via 165° track to IYOBE and right turn via 251° track to GOLET and hold, continue climb-in-hold to 4000.

ATIS <b>132.65</b>	SANTA BARBARA APP CON <b>120.55 319.15</b> (151°-329°) <b>125.4 291.1</b> (330°-150°)	SANTA BARBARA TOWER ★ <b>119.7</b> (CTAF) <b>0 254.35</b>	GND CON <b>121.7</b>	CLNC DEL <b>132.9</b>	UNICOM <b>122.95</b>
-----------------------	---	--	-------------------------	--------------------------	-------------------------



ELEV 14	<b>D</b>	TDZE 13
---------	----------	---------



Procedure Turn NA		4000	CESRA	IYOBE	GOLET
ECEVA		↑	✧	✧	△
NAPPS		*LNAV only			
GP 3.00° TCH 48		For LNAV/VNAV fly visual to airport, 074° -2.5 NM, when using Oxnard altimeter setting 2.9 NM.			
6.3 NM		3.8 NM	1.6 NM		
CATEGORY	A	B	C	D	
LPV DA	380/40				367 (400-¾)
LNAV/VNAV DA	866-2	853 (900-2)	853 (900-2½)	866-2¾ 853 (900-2¾)	
LNAV MDA	560/24	547 (600-½)	560/50 547 (600-1)	560/60 547 (600-1½)	
CIRCLING	800-1 786 (800-1)	800-1¼ 786 (800-1¼)	800-2¼ 786 (800-2¼)	1000-3 986 (1000-3)	