

LOC/DME I-SMX <b>108.9</b> Chan <b>26</b>	APP CRS <b>300°</b>	Rwy Idg TDZE Apt Elev	N/A N/A <b>261</b>
---	------------------------	-----------------------------	--------------------------

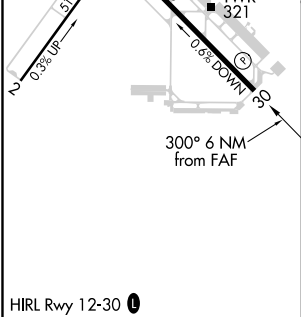
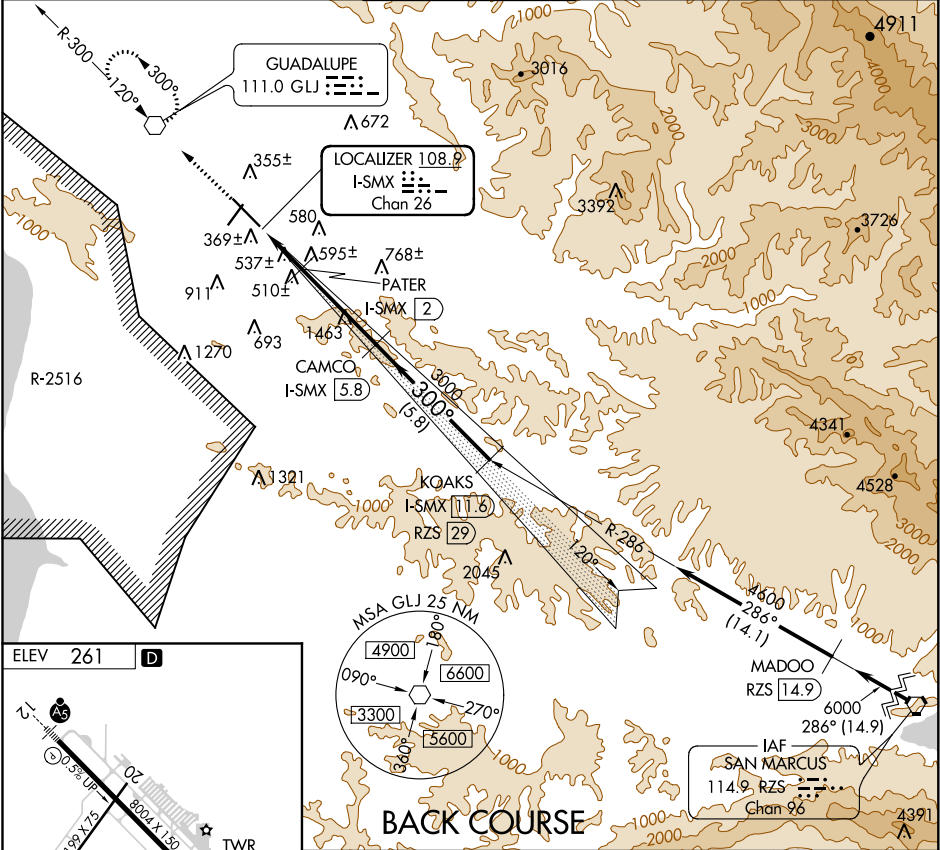
LOC/DME BC-A

SANTA MARIA PUBLIC/CAPTAIN G ALLAN HANCOCK FIELD (SMX)

Circling to Rwy 2 NA at night.  
Helicopter visibility reduction below 1 SM NA.

MISSED APPROACH: Climb to 2100 direct GLJ VOR and hold.

ATIS <b>121.15</b>	SANTA BARBARA APP CON* <b>124.15 327.8</b>	SANTA MARIA TOWER* <b>118.3(CTAF) 239.25</b>	GND CON <b>121.9</b>	UNICOM <b>122.95</b>
-----------------------	---	---	-------------------------	-------------------------



2100	GLJ	Use I-SMX DME when on LOC course.	KOAKS I-SMX 11.6 RZS 29	4600	Procedure Turn NA
		PATER I-SMX 2	CAMCO I-SMX 5.8		
		I-SMX 0.5			
		1720	3000		Disregard glide slope indications
		0.7	1.5	3.8 NM	5.8 NM
CATEGORY	A	B	C	D	
CIRCLING	1100-1 839 (900-1)	1100-1¼ 839 (900-1¼)	1100-2½ 839 (900-2½)	1320-3 1059 (1100-3)	

SW-3, 03 DEC 2020 to 31 DEC 2020

SW-3, 03 DEC 2020 to 31 DEC 2020