

EL CENTRO, CALIFORNIA

VOR/DME RWY 30

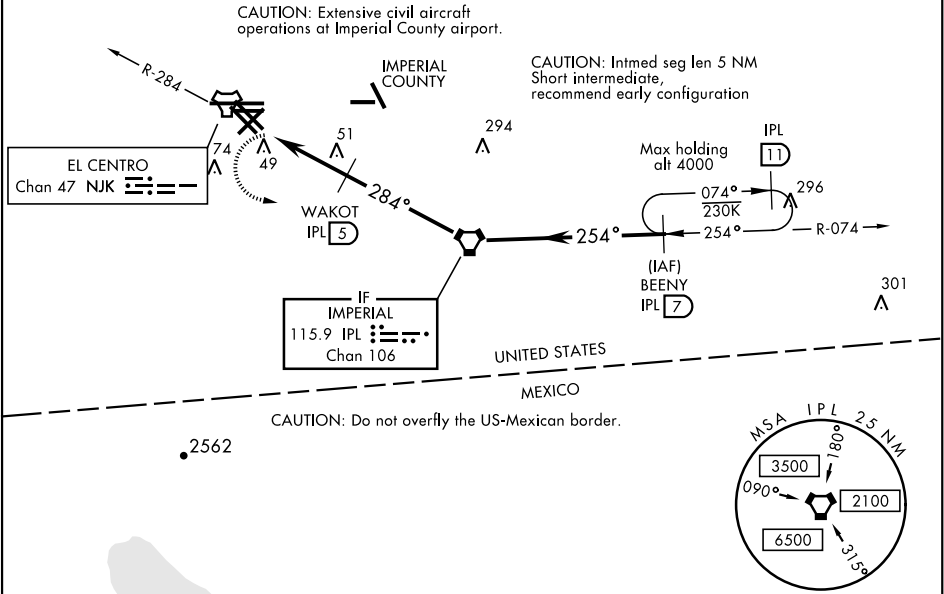
VORTAC IPL 115.9 Chan 106	APCH CRS 284°	Rwy Idg TDZE -42 Arpt Elev -42
---	-------------------------	--

AL-472 [USN]

EL CENTRO NAF (VRACIU FLD) (KNJK)

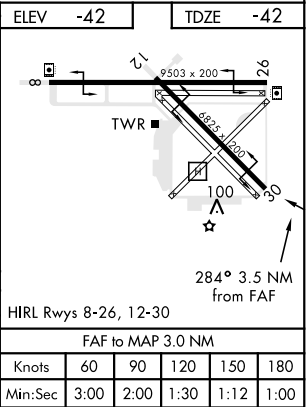
▼ Visibility reduction by helicopters NA.		MISSED APPROACH: Climb to 600, then climbing left turn to 2000, intercept IPL VORTAC R-074 to BEENY and hold.		
ATIS ★ 269.275	LOS ANGELES CENTER 128.6 291.7	EL CENTRO TOWER ★ 119.1 360.2	GND CON 121.9 254.35	CLNC DEL 340.2

RWY 30: 20:1 visual area penetrated by
Fence, lit, 289 ft from thld, 213 ft right of course, 8 AGL/-34 MSL
Fence, 199 ft from thld, 305 ft right of course, 8 AGL/-34 MSL,
Fence, 504 ft from thld, 3 ft right of course, 8 AGL/-34 MSL,



EMERG SAFE ALT 100 NM 17,100 from NJK TACAN

600	2000	IPL R-074	BEENY IPL 7	VORTAC	BEENY IPL 7
				284°	254°
				1500	2000
				1100	
				2.94°	
				TCH 50	
				0.5	3 NM
CATEGORY	A	B	C	D	
S-30	340-1 382 (400-1)	340-1 382 (400-1 1/2)	420-1 462 (500-1)	520-2 562 (600-2)	
CIRCLING	420-1 462 (500-1)	420-1 462 (500-1 1/2)	520-2 562 (600-2)		



EL CENTRO, CALIFORNIA

32°50'N-115°40'W

EL CENTRO NAF (VRACIU FLD) (KNJK)

Amdr 4 18JUN20

VOR/DME RWY 30

SW-3, 03 DEC 2020 to 31 DEC 2020

SW-3, 03 DEC 2020 to 31 DEC 2020