

HI-ILS or LOC/DME Z RWY 23L

LOC I-EDW 110.1	APCH CRS 226°	Rwy Idg TDZE Arpt Elev 15,024 2286 2311
---------------------------	-------------------------	---

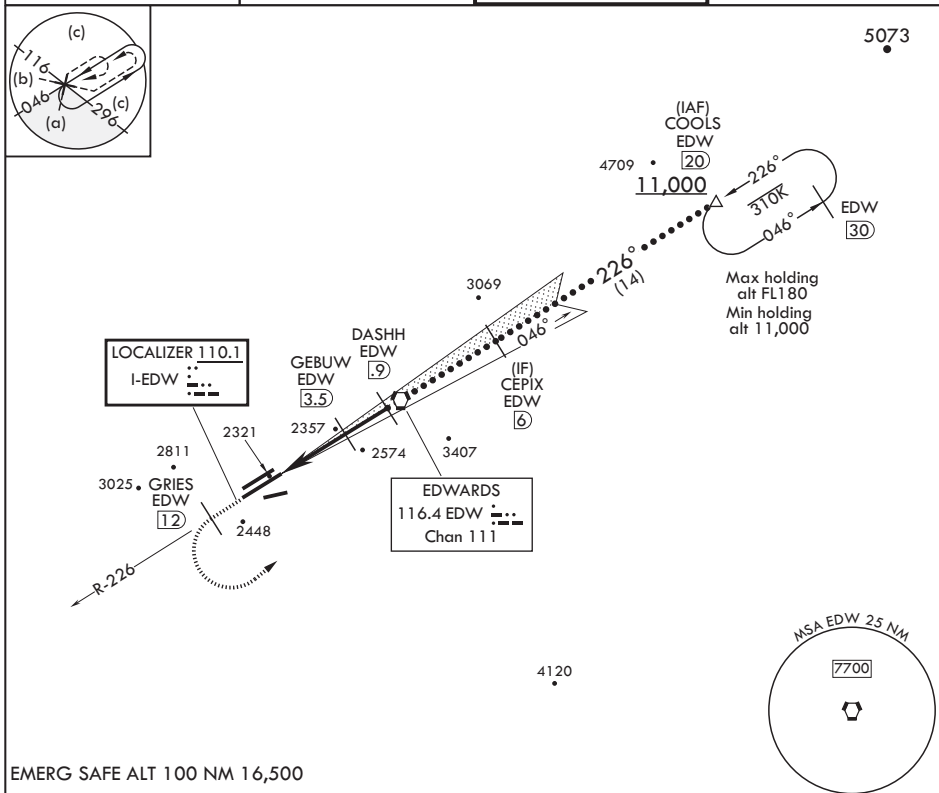
JAL-500 (USAF)

EDWARDS AFB (KEDW)

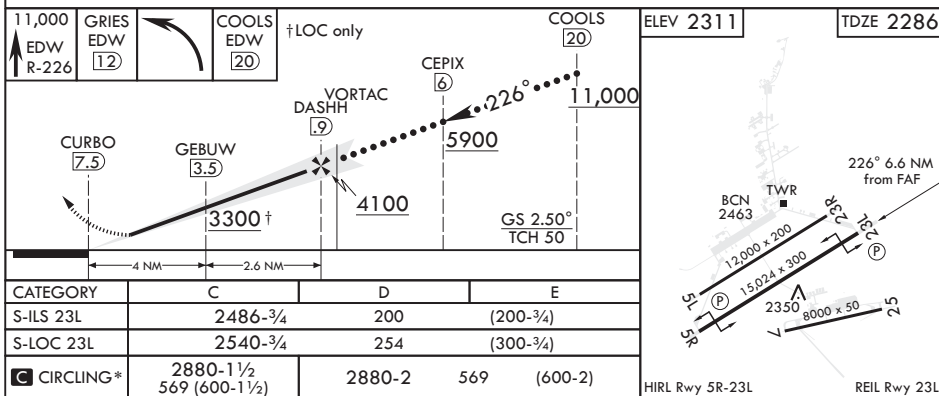
⚠ * Circling not authorized NW of Rwy 5L-23R. Circling not authorized at night to Rwy 5L-23R.

MISSED APPROACH: Climb to 11,000. Track EDW VORTAC R-226 outbound to GRIES, then turn left direct COOLS and hold. Missed Approach requires use of RNAV or ATC RADAR monitoring.

ATIS★ 127.425 269.9	SPORT APP CON/DEP CON 132.75 343.7	TOWER★ 120.7 318.1	GND CON 121.8 225.4
-------------------------------	--	------------------------------	-------------------------------



EMERG SAFE ALT 100 NM 16,500



EDWARDS, CALIFORNIA

34°55'N - 117°53'W

EDWARDS AFB (KEDW)

Amdt 1 30JAN20

HI-ILS or LOC/DME Z RWY 23L