

## HI-TACAN Z RWY 23L

VORTAC EDW 116.4 Chan 111	APCH CRS 226°	Rwy Idg TDZE Arpt Elev	15,024 2286 2311
---------------------------------	------------------	------------------------------	------------------------

JAL-500 (USAF)

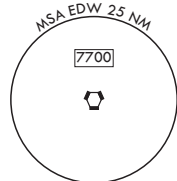
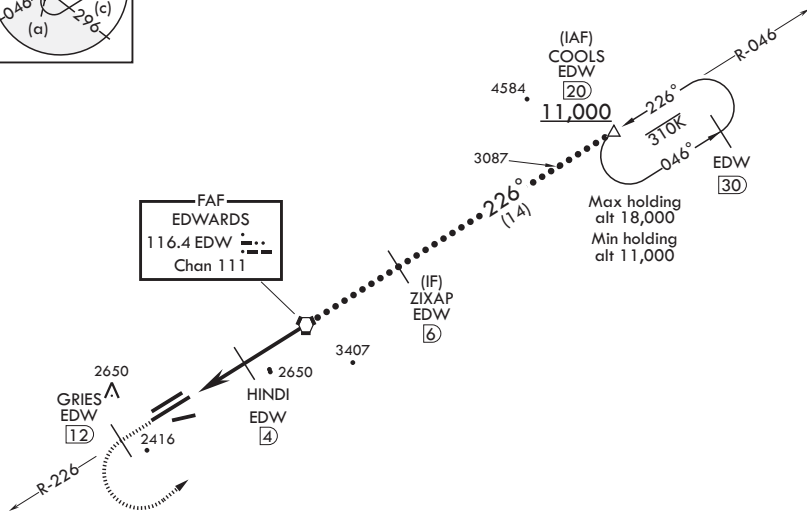
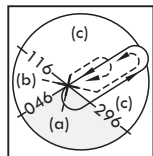
EDWARDS AFB (KEDW)

⚠ \* Circling NA NW of Rwy 5L-23R. Circling not authorized at night to Rwy 5L-23R.

MISSED APPROACH: Climb to 11,000. Track EDW VORTAC R-226 outbound to GRIES, then turn left direct COOLS and hold. Missed approach requires use of RNAV or ATC radar monitoring.

ATIS★ 127.425 269.9	SPORT APP CON/DEP CON 132.75 343.7	TOWER★ 120.7 318.1	GND CON 121.8 225.4
------------------------	---------------------------------------	-----------------------	------------------------

5145



EMERG SAFE ALT 100 NM 16,500

11,000 EDW R-226	GRIES EDW 12	COOLS EDW 20	ELEV 2311	TDZE 2286
VGS and descent angles not coincident (VGS Angle 3.00/TCH 49).			HIRL Rwy 5R-23L REIL Rwy 23L	
CATEGORY	C	D	E	
S-23L	2640-1	354	(400-1)	
CIRCLING*	2880-1 1/2 569 (600-1 1/2)	2880-2	569	(600-2)

EDWARDS, CALIFORNIA

34°55'N - 117°53'W

EDWARDS AFB (KEDW)

Amdt 1 30JAN20

## HI-TACAN Z RWY 23L