

EDWARDS, CALIFORNIA

# ILS or LOC/DME Y RWY 23L

LOC I-EDW <b>110.1</b>	APCH CRS <b>226°</b>	Rwy Idg TDZE Arpt Elev <b>15,024</b> <b>2286</b> <b>2311</b>
---------------------------	-------------------------	---

AL-500 [USAF]

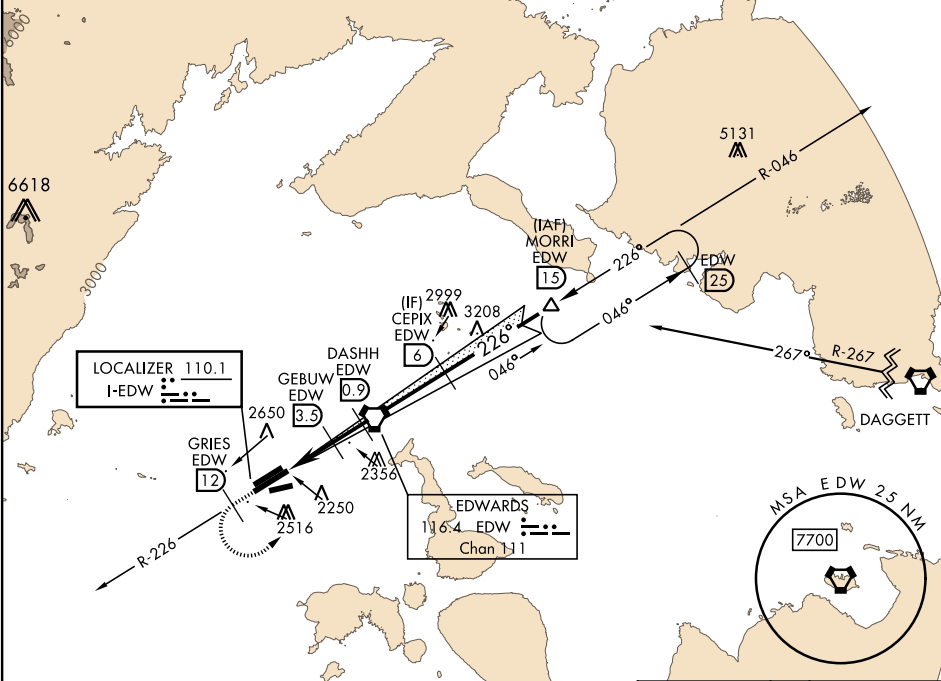
EDWARDS AFB (KEDW)

★Circling not authorized NW of Rwy 5L-23R.  
Circling not authorized at night to Rwy 5L-23R.

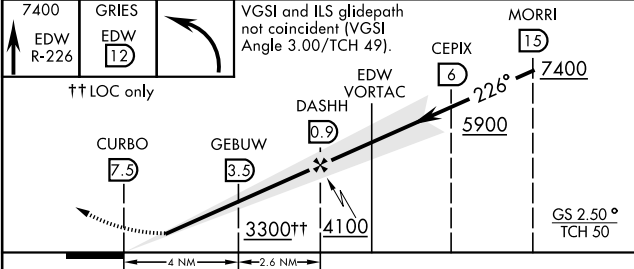
†MISSED APPROACH: Climb to 7400. Track EDW R-226 outbound to GRIES, then turn left direct MORRI and hold.

ATIS ★ <b>127.425 269.9</b>	SPORT APP CON <b>132.75</b>	EDWARDS TOWER ★ <b>120.7 318.1</b>	GND CON <b>121.8 225.4</b>
--------------------------------	--------------------------------	---------------------------------------	-------------------------------

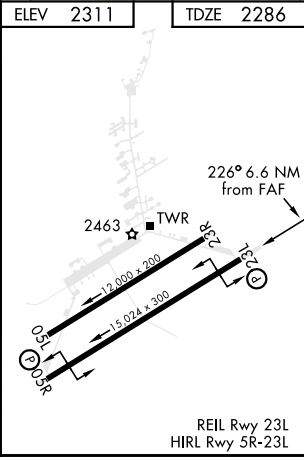
†Missed approach requires use of RNAV or ATC RADAR monitoring.



EMERG SAFE ALT 100 NM 16,500



CATEGORY	A	B	C	D	E
S-ILS 23L	2486-3/4	200	(200-3/4)		
S-LOC 23L	2540-1	254	(300-1)		
★CIRCLING★	2880-1 569 (600-1)	2880-1 1/2 569 (600-1 1/2)	2880-2 569 (600-2)		



EDWARDS, CALIFORNIA

34° 55'N - 117° 53'E

EDWARDS AFB (KEDW)

Amtd 2 23APR20

# ILS or LOC/DME Y RWY 23L

SW-3, 03 DEC 2020 to 31 DEC 2020

SW-3, 03 DEC 2020 to 31 DEC 2020