

VOR/DME or TACAN Y RWY 5R

VORTAC EDW 116.4 Chan 111	APCH CRS 046°	Rwy Idg 15,024 TDZE 2303 Arpt Elev 2311
---	-------------------------	--

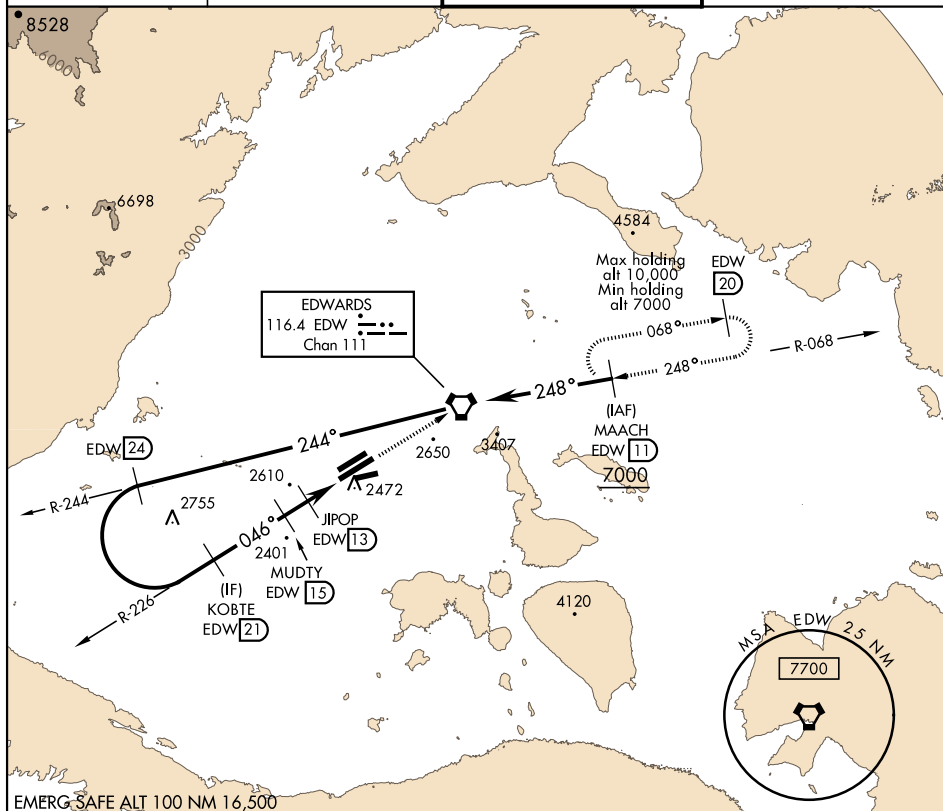
AL-500 [USAF]

EDWARDS AFB (KEDW)

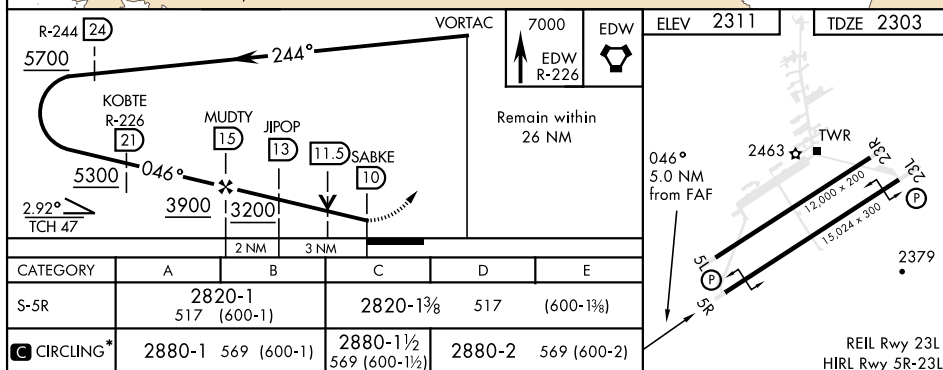
★ Circling not authorized NW of Rwy 5L-23R.
Circling not authorized at night to Rwy 5L-23R.

MISSED APPROACH: Track EDW VORTAC R-226 to EDW.
Intercept EDW R-068 to MAACH and hold. Maintain 7000.
Missed approach requires use of RNAV or ATC radar monitoring.

ATIS ★ 127.425 269.9	SPORT APP CON 132.75 343.7	EDWARDS TOWER ★ 120.7 318.1	GND CON 121.8 225.4
--------------------------------	--------------------------------------	---------------------------------------	-------------------------------



EMERG SAFE ALT 100 NM 16,500



EDWARDS, CALIFORNIA

34°55'N-117°53'W

EDWARDS AFB (KEDW)

Amdt 3 23APR20

VOR/DME or TACAN Y RWY 5R