

WAAS CH 77941 W30A	APP CRS 302°	Rwy Idg 4995 TDZE -121 Apt Elev -115
----------------------------------------	------------------------	-----------------------------------------------------------------

RNAV (GPS) RWY 30

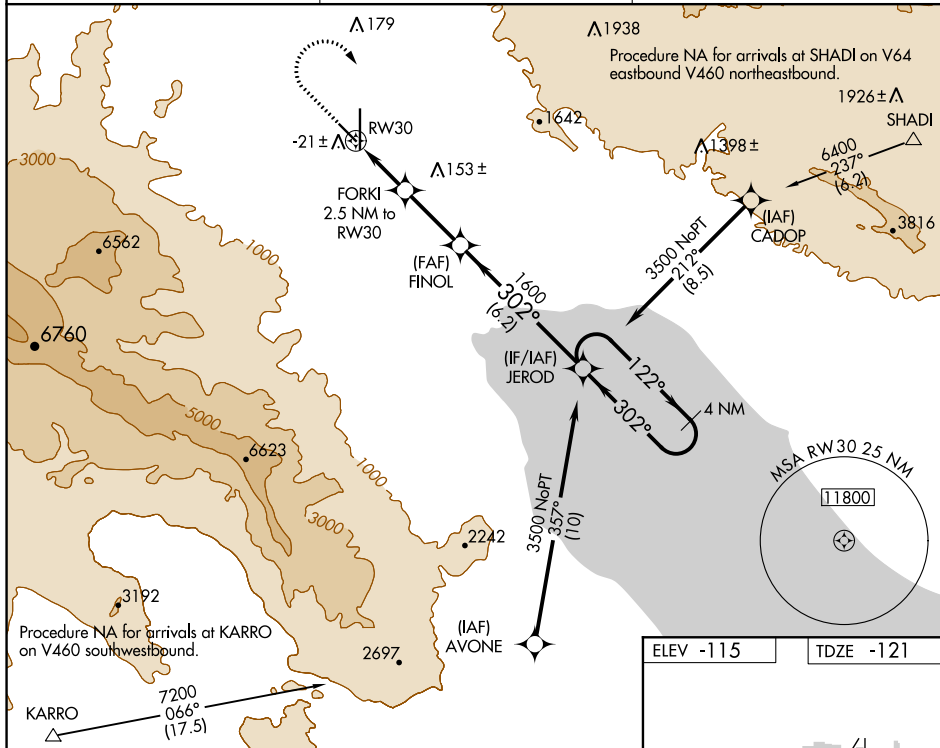
JACQUELINE COCHRAN RGNL (TRM)

RNP APCH.

T
A Rwy 30 helicopter visibility reduction below $\frac{3}{4}$ SM NA.

MISSED APPROACH: (Do not exceed 230K until JEROD)
Climb to 1200 then climbing right turn to 3500 direct
JEROD and hold.

ASOS 118.325	SOCAL APP CON ★ 135.275 251.1	UNICOM 123.0 (CTAF) ①
------------------------	-----------------------------------------	---------------------------------



						VGSI and RNAV glidepath not coincident (VGSI Angle 3.00/TCH 25).	
* LNAV only		FORKI 2.5 NM to RW30		FINOL 1600		JEROD 4 NM Holding Pattern	
		* 1.1 NM to RW30					
RW30		700*		1600		GP 3.00° TCH 45	
1.1		1.4 NM		2.8 NM		6.2 NM	
CATEGORY		A		B		C	
LPV DA		129-3/4 250 (300-3/4)					
LNAV MDA		260-1 381 (400-1)				260-1 1/8 381 (400-1 1/8)	
CIRCLING		320-1 435 (500-1)		340-1 455 (500-1)		460-1 1/2 575 (600-1 1/2)	
						780-3 895 (900-3)	

