

APP CRS	Rwy Idg	<b>6857</b>
<b>130°</b>	TDZE	<b>451</b>
	Apt Elev	<b>476</b>

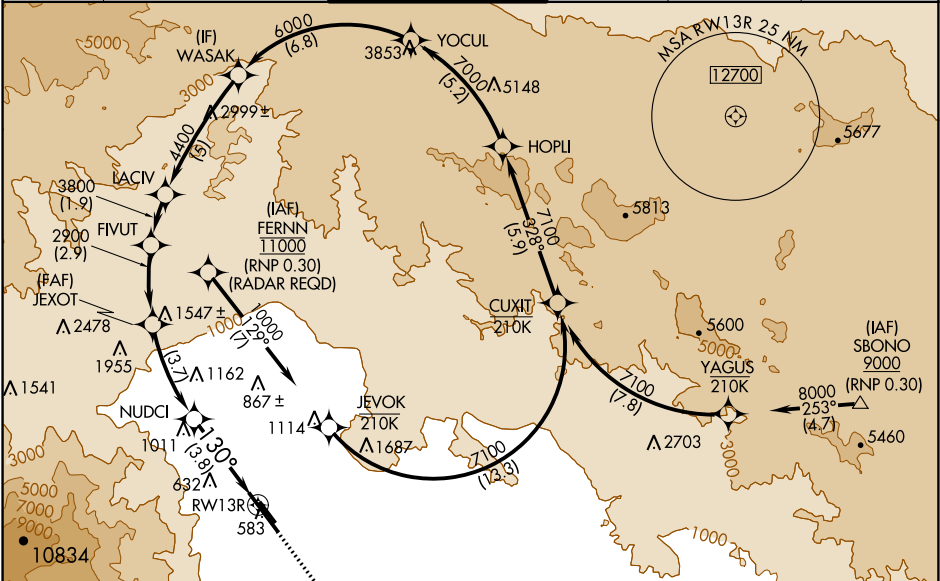
# RNAV (RNP) Z RWY 13R

PALM SPRINGS INTL (PSP)

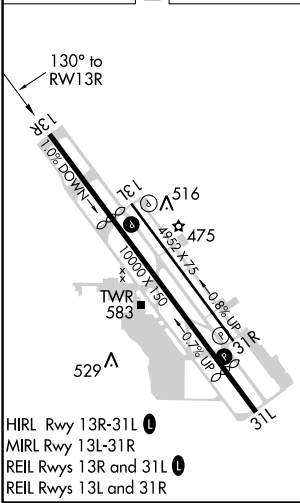
RNP AR APCH, RF required.	
For uncompensated Baro-VNAV systems, procedure NA below 1°C or above 54°C.	

MISSED APPROACH: Climb to 900 then climbing left turn to 4000 direct TRM VORTAC and hold.

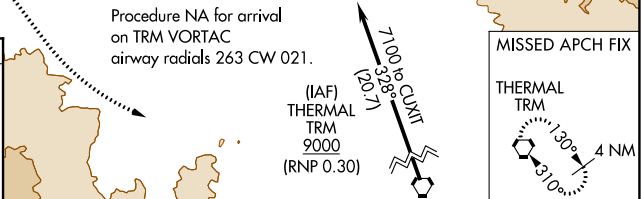
ATIS	SOCAL APP CON *	PALM SPRINGS TOWER *	GND CON	CLNC DEL	UNICOM
<b>124.65</b>	<b>126.7 370.95</b> <b>135.275 251.1</b>	<b>119.7 (CTAF) 377.05</b>	<b>121.9</b>	<b>128.35</b>	<b>122.95</b>



ELEV <b>476</b>	<b>D</b>	TDZE <b>451</b>
-----------------	----------	-----------------



PALM SPRINGS, CALIFORNIA  
Amdt 1A 05DEC19



WASAK		VGSI and descent angles not coincident (VGSI Angle 3.00/TCH 47).		900	4000	TRM
6000	LACIV	FIVUT	JEXOT	NUDCI	RWY 13R	
GP 3.00° TCH 45	4400	3800	2900	1713		
	5 NM	1.9 NM	2.9 NM	3.7 NM	3.8 NM	
CATEGORY	A	B	C	D		
RNP 0.17 DA		812-1¼	361 (400-1¼)			
RNP 0.30 DA		882-1½	431 (500-1½)			

## AUTHORIZATION REQUIRED