

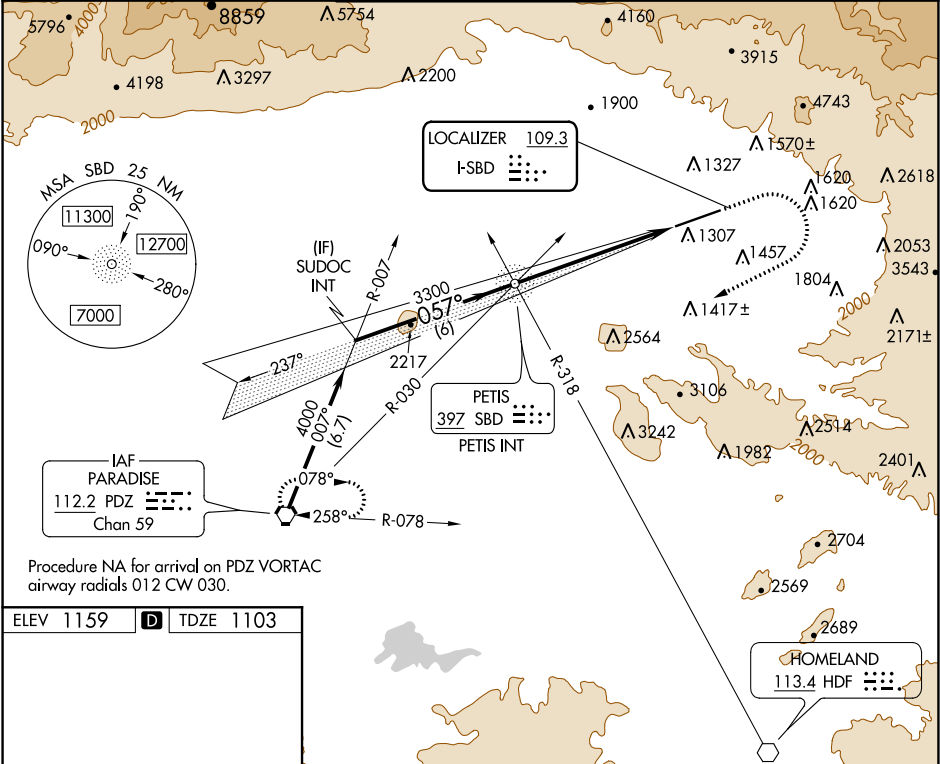
LOC I-SBD 109.3	APP CRS 057°	Rwy ldg 10000 TDZE 1103 Apt Elev 1159
---------------------------	------------------------	--

ILS or LOC Z RWY 6
SAN BERNARDINO INTL (SBD)

⚠ Circling NA northwest of Rwy 6-24. When local altimeter setting not received, use Ontario altimeter setting and increase DA to 1426 feet and all visibilities $\frac{1}{4}$ SM; increase all MDA 80 feet and S-LOC Cats C/D and Circling Cat C visibility $\frac{1}{4}$ SM.

MISSED APPROACH: Climb to 2000 then climbing right turn to 6000 direct PDZ VORTAC and hold, continue climb-in-hold to 6000.
* Missed approach requires minimum climb of 340 feet per NM to 4000; if unable to meet climb gradient, see LOC Y RWY 6.

ATIS 124.175	SOCAL APP CON 127.0 318.2	SAN BERNARDINO TOWER ★ 119.45 (CTAF) 0	GND CON 121.8	UNICOM 122.975
------------------------	-------------------------------------	--	-------------------------	--------------------------



ELEV 1159 **D** TDZE 1103

HIRL Rwy 6-24 **0**
REIL Rwy 6 and 24 **0**

FAF to MAP 6.1 NM

Knots	60	90	120	150	180
Min:Sec	6:06	4:04	3:03	2:26	2:02

057° 6.1 NM from FAF

TWR

07% UP

08% DOWN

10000 X 200

GS 3.00° TCH 51	SUDOC INT			
	PETIS NDB/INT			
	2000 6000 PDZ			
	4000 057° 3118 3300			
CATEGORY	A	B	C	D
S-ILS 6*	1353- $\frac{3}{4}$ 250 (200- $\frac{3}{4}$)			
S-LOC 6*	1740-1 637 (600-1)		1740- $\frac{1}{4}$ 637 (600- $\frac{1}{4}$)	
C CIRCLING	1740-1 581 (600-1)		1760- $\frac{1}{4}$ 601 (700- $\frac{1}{4}$) 2640-3 1481 (1500-3)	